



Car Free Style

By train, on foot or by bike

From Eupen to Liège

© WBT - Hike Up/Railtrip/Travel



In collaboration with

Railtrip.travel



© WBT - Denis Ervoaux

This brochure provides all you need for a few days in Wallonia without a car.

It forms part of a series of interconnectable routes. By combining these short stays, you'll have an easy to follow way of spending wonderful sustainable adventures in Wallonia. These itineraries always start from a station with the following options to continue the train and by bike or by train and on foot.

Travelling in **slow tourism** mode gives you time to enjoy the landscapes, take in surrounding nature, local products, visits and warm hospitality.



© Dominik ketz



© Berpoit Coenen



© François Struzik

From Eupen to Liège



Heading east, between the River Vesdre and gourmet pleasures

Check out this multi-day adventure between **Eastern Cantons and the city of Liège**. It's a multilingual, hilly territory, steeped in history due to its geographical location, in direct vicinity of Germany and Netherlands. On this itinerary, you start from Eupen, the capital of the **German-speaking Community** of Belgium, which has many historical monuments, amazing nature and excellent gastronomy. Strolling through the streets you'll notice Baroque style architecture dating back the heyday of the 17th and 18th century cloth industry. Whilst the lake and the dam at Eupen, sometimes called «Dam of the Vesdre» is the largest artificial lake and at 63 metres high, offers an exceptional view across the landscape.

After a few kilometres in the Eastern Cantons, you take the path, on foot or by bike, for the Entre-Vesdre-et-Meuse, Pays de Herve. All around you'll see typical 17th and 18th century farms, groves (meadows limited by hedges bordering hollow paths), orchards and hedges. The **'Pays de Herve'** is known for delicious local produce such as the famous Herve cheese, the apple and pear syrup and its beers. The old disused railway line – called Line 38 – is the real backbone of the Pays de Herve. By bike, you continue your journey on this magnificent Line 38 to Liège. On foot, you can head to the Vesdre Valley, with quirks and curiosities from its industrial past.

Finish your walk along the river in **Chaufontaine** where you'll discover a fascinating 4D exhibition 'Source O Rama' on the underground journey of a single drop of water. You then arrive as a cyclist or hiker in Liège to find a dynamic city full of heritage and history well worth extending your trip by a few days.



© Patrick Duers

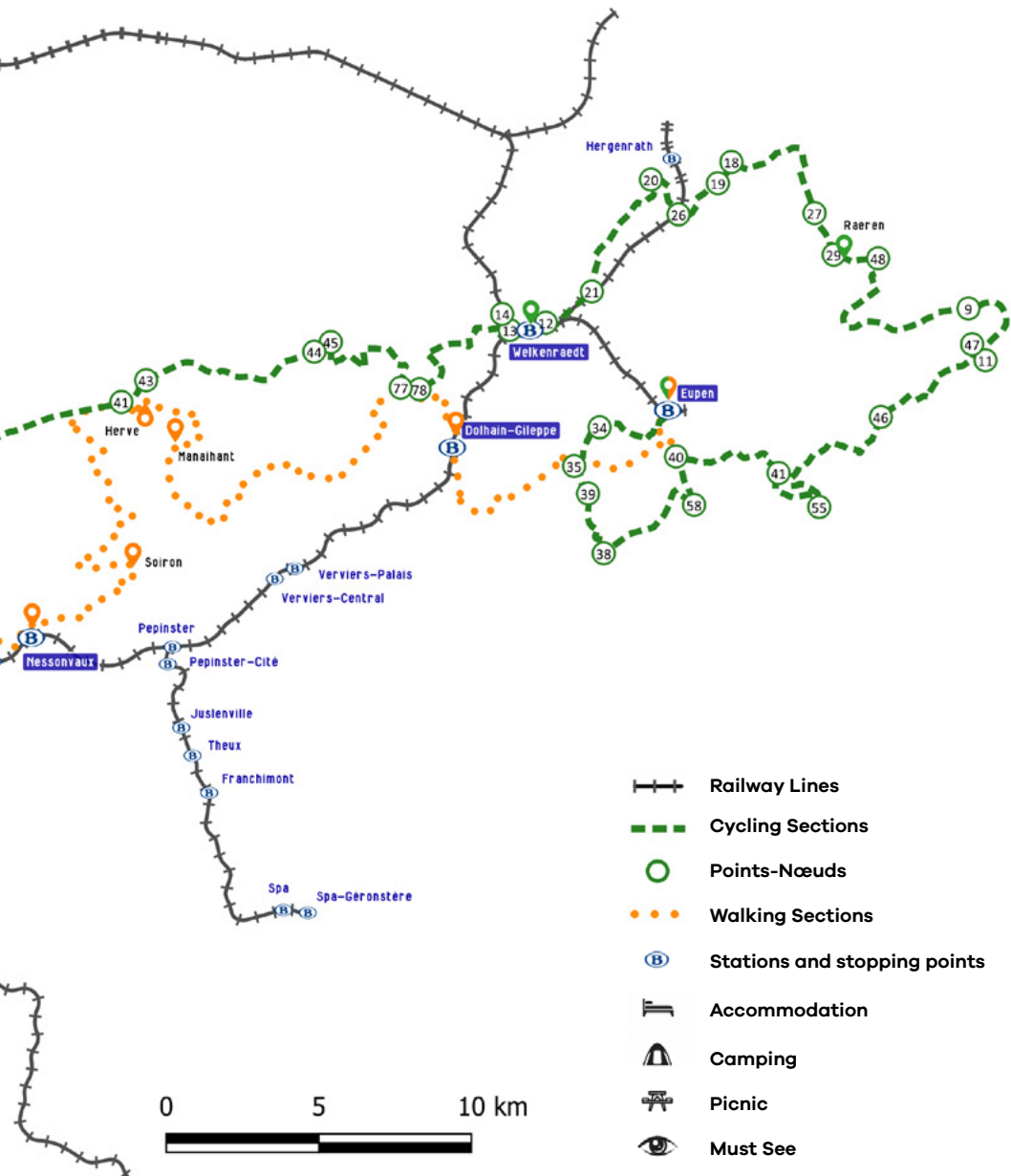
General map & itineraries



© WBT - Denis Erroyaux

Find all our car-free itineraries on visitwallonia.be/carfree







By train



Stages by train

What's the concept of this slow tourism route?

It's a combination of train journeys and sections to be taken on foot or by bike. The different stages proposed are in accordance with the accommodation and sights suggested in this route. The sections can of course be combined with the train depending on the desired pace. Stations are available at pretty much every section.

#1

Between Aachen and Liège on line 37 and between Eupen and Welkenraedt on line 49

- 1 train per hour serves the route from Aachen to Welkenraedt and Dolhain-Gileppe
- 1 train per hour connects Eupen and Welkenraedt stations
- 1 train per hour connects Welkenraedt and Liège-Guillemins stations
- 1 omnibus train per hour connects the stations of Nessonvaux, Trooz, Chaudfontaine and Liège-Guillemins

PRICES & INFO

On all these lines, it is possible to travel on-board with your bikes:
€4/bike/journey + ticket price.

Find more information, timetables and prices on
www.belgiantrain.be



Our tips for travelling more easily by train



- Buy your tickets via the **app**, **ticket offices** or **vending machines**.
If you travel by bicycle, don't forget that you will need to buy a ticket for **each bike** (4€ per trip).
On the vending machine the bike ticket is in 'supplement'.
Folding bikes travel free.
- Arrive early to have time to settle with your bike. Small stations are usually relatively well suited for transporting a bicycle from platform to the other. In the largest stations, traveling with a bicycle is more complex and requires a little more time.
- Wheel your **bike by hand** in the station, on the platforms and on the train.
- **Speak to the train conductor** before boarding: he will tell you, (often with a smile), if there are still places available and in which part of the train they are. More and more trains are **equipped with a pictogram indicating the location of the compartment/space dedicated to bicycles**.
- Remove your bags and do not place your bike against a toilet or in front of an access door.
- Bring a **lock**: you will be able to travel sitting down even if there is no space next to your bike.
- Travel outside peak hours, this will allow you more a more comfortable journey on the go.
- Anticipate getting off in advance this will save you stress and make it easier for other travelers to get off.
- **'Bruxelles-Central', 'Bruxelles-Chapelle' and 'Bruxelles-Congrès' (Station) are prohibited for bicycles.**
- Choose accommodation that has bed and bath linen and offers you a solution for breakfast (on site, pastry basket delivery, nearby bakery, etc.), so you can **travel light**.
- Make sure you can eat where you sleep or in the immediate vicinity. After a day of hiking or cycling, you will not necessarily want to get back in road for your evening meal.



On foot

© WBT - Hike UP/Railtrip/Travel

BE YOUR OWN GUIDE

Download the GPX file or the application for your phone on www.cirkwi.com.

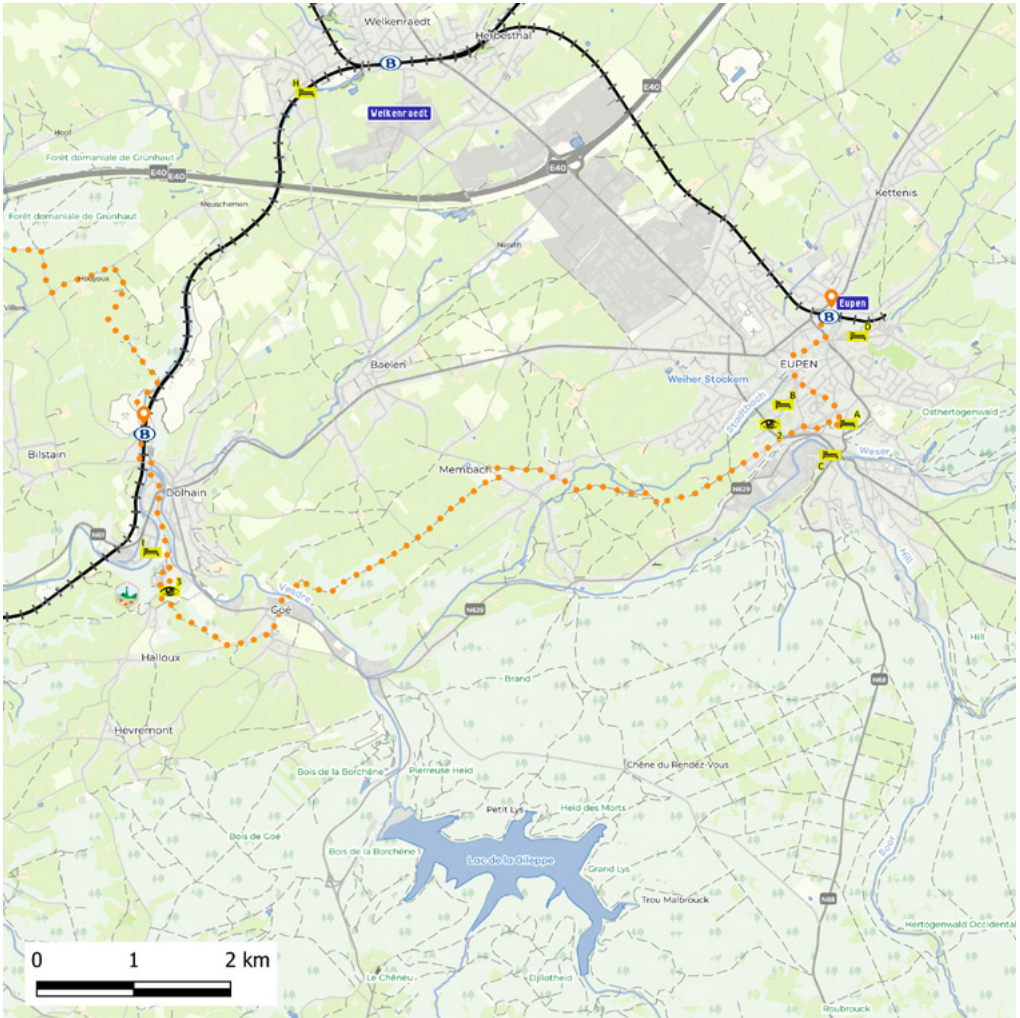
You'll also find different routes and stages for bikes or on foot, as well as itineraries, activities or accommodation.

TOTAL ROUTE
ON FOOT:

69,2 Km

DIFFICULTY: ●●●





	km 13,1	 3H00	DIFFICULTY 	SIGNPOSTING
--	--------------------------	-----------------	-----------------------	------------------------

On foot

1 By train

'Gare de Aachen' (Station) - 'Gare d'Eupen' (Station)

Duration

38 min

Frequency

1 train per hour



Take the train from Aachen to Welkenraedt (line 37) and then from Welkenraedt to Eupen (line 49)




Don't miss the chance to visit the city of Eupen

2

'Gare d'Eupen' (Station) - 'Gare de Dolhain-Gileppe' (Station)

Signposting

GRP 563  then GR 573 

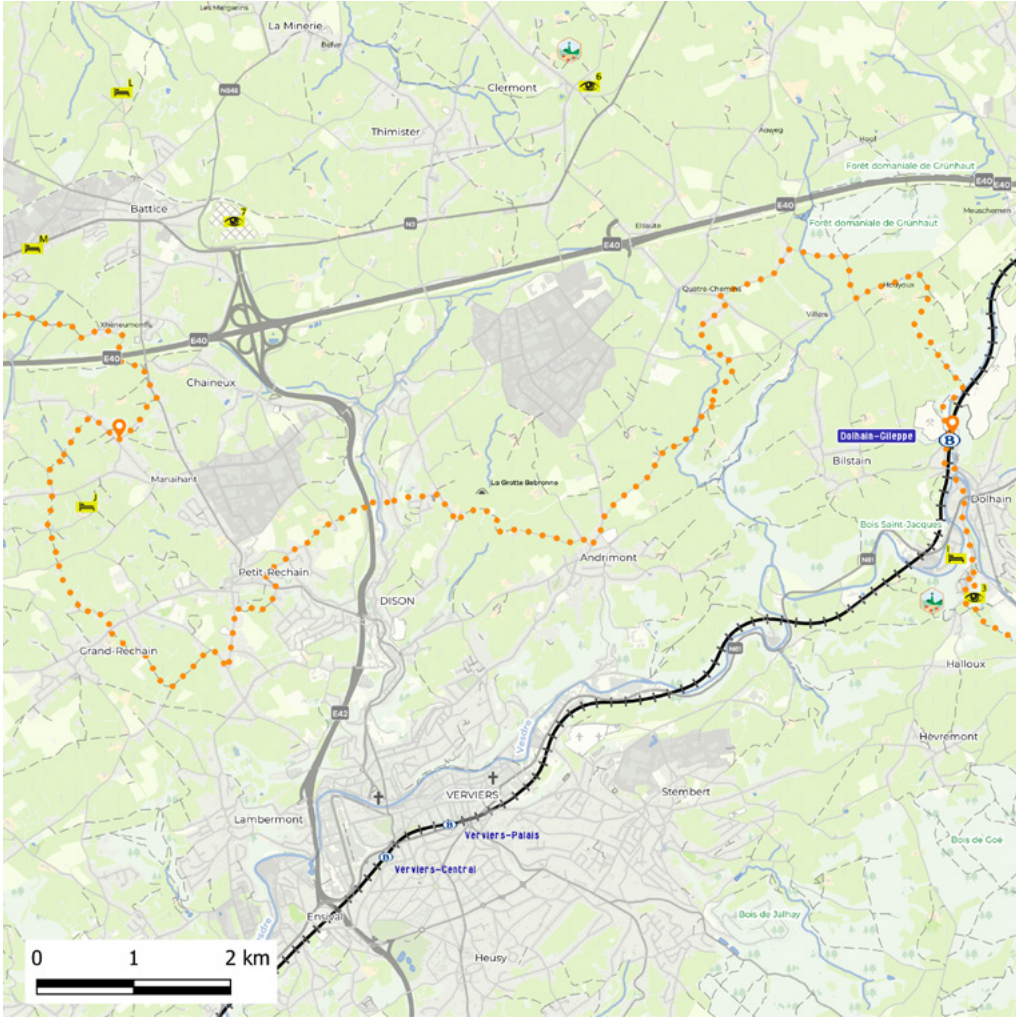
- 1 When you leave Eupen station, head left.
- 2 At the small roundabout, go down the street on your right.
- 3 At the bottom, turn left along 'Hookstrasse'.
- 4 At the traffic lights, turn right towards the city centre. Take the charming 'Gosperstrasse'. After passing the church on your left, walk along the square on the right and continue straight.
- 5 At the crossroads, you will find the signposting for the GRP 563 , follow it to the left.
- 6 Follow it to the Kaleo gite, and then follow the signposting GR 573 .
- 7 After 10,9 km from Eupen station, on the climb to Limbourg, you'll reach a stone wall on your right, take the link to Dolhain station along this stone wall following the « *station connection* »  (without taking into account the red and white cross on the post to the left of the path).
- 8 Leaving the path, turn right and reach the superb square in uptown Limbourg.
- 9 At the church, turn right and follow the signposting to Dolhain-Gileppe station.

Possibility of doing this whole section by train:

Line 49 (Eupen - Welkenraedt)
then line 37 (Welkenraedt - Dolhain-Gileppe)


• **Eupen - Dolhain-Gileppe**
1 train per hour

Timetable and prices: www.belgiantrain.be

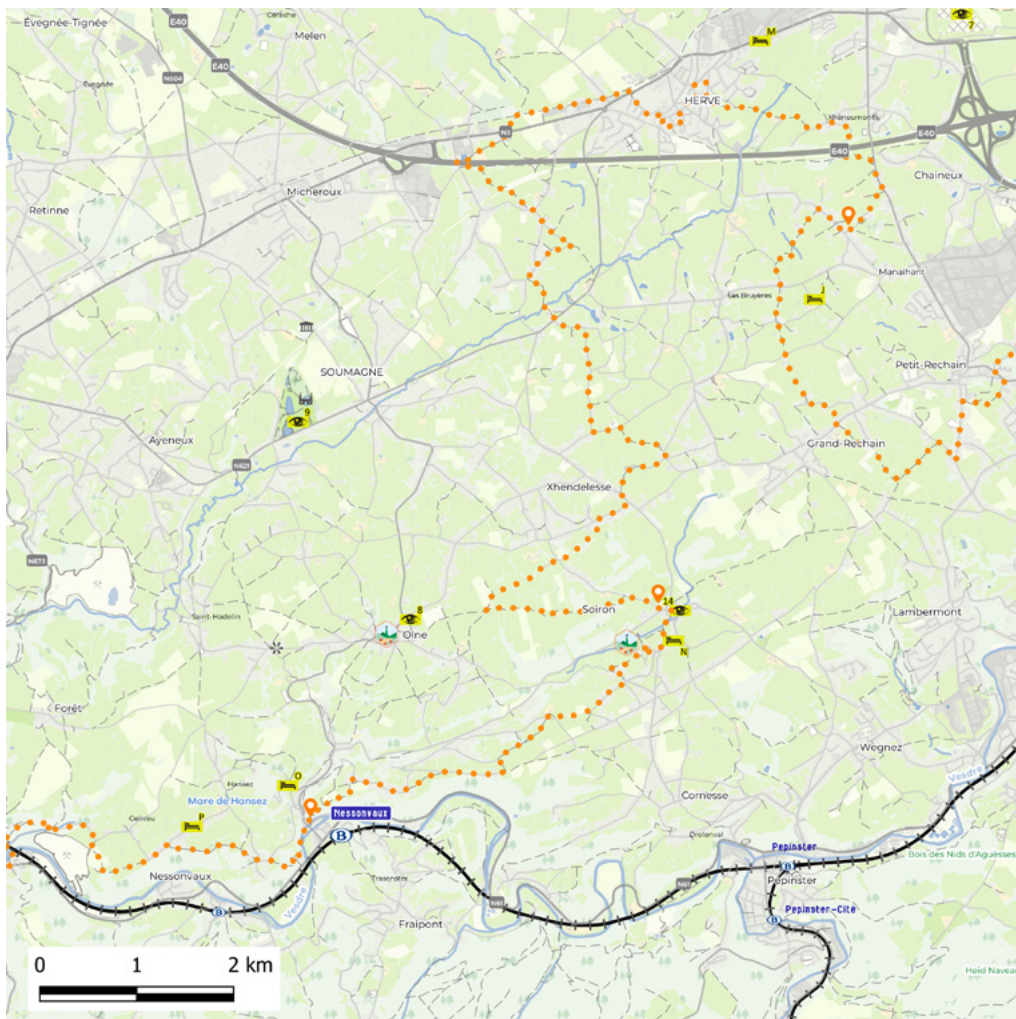


	km 19,4	 5H30	DIFFICULTY 	SIGNPOSTING
--	--------------------------	-----------------	-----------------------	------------------------

'Gare de Dolhain-Gileppe' (Station) - Manaihant**Signposting**GRP 563 

- 1 At Dolhain-Gileppe station, with the station behind you, turn right towards Chemin Saint-Roch, along the rails (green signposting).
- 2 Leave the quarry on your left and continue on the road which turns into a path, skirting the houses.
- 3 After branching off to the left, at the cross, along the meadow, the path crosses an open barrier (with a dead end sign). You find the GRP 563 . Follow it straight on the stony path (not the path that goes up to the right).





	km		DIFFICULTY	SIGNPOSTING
 4	17,9	5H00	● ● ●	
 5	5,7	1H30	● ● ○	

4

Manihant - Soiron

Signposting








GRP 563 

5

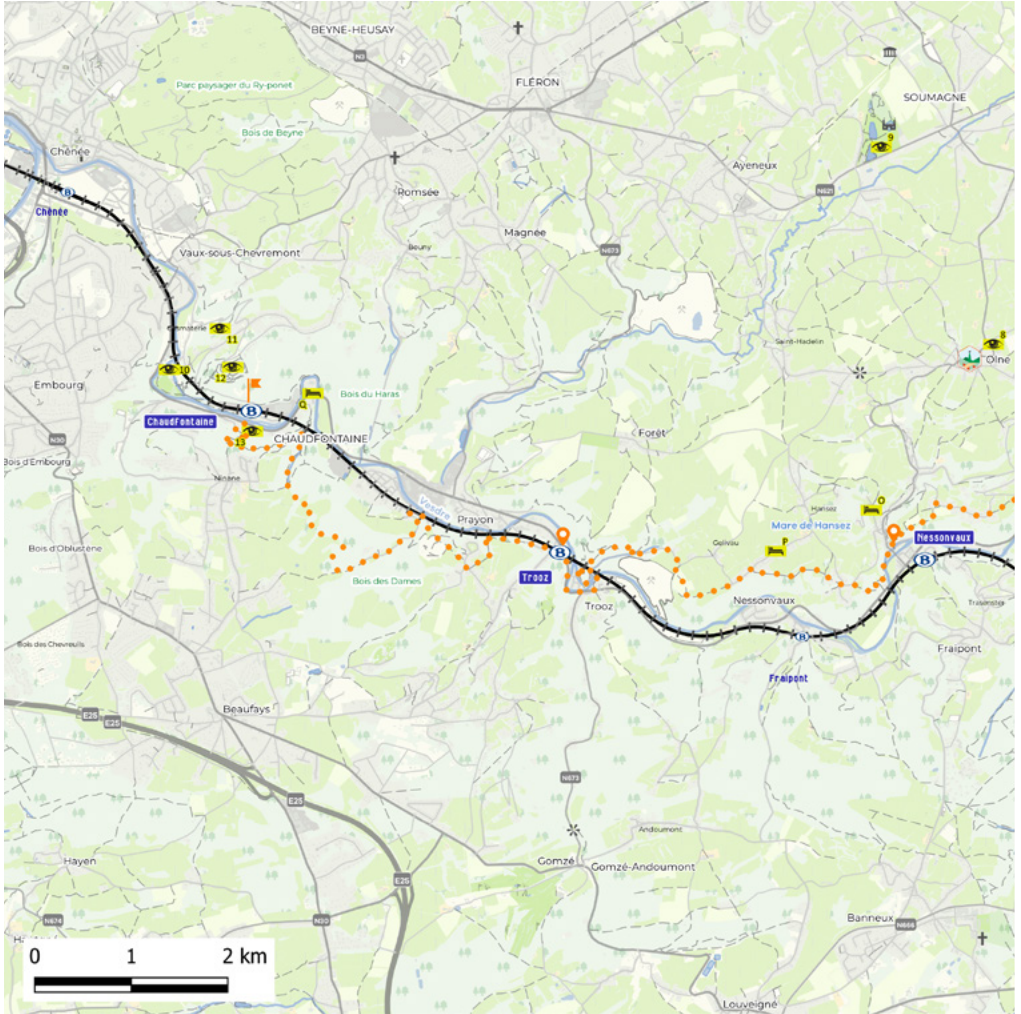
Soiron - 'Gare de Nessonvaux' (Station)






Signposting

GRP 563 

- 1 At Soiron, follow the GRP 563 .
- 2 After 5 km, in the village of Grihanster, when the road turns to the right with the indications GR 5  and GRP 563 , take the path on your left between houses n°22A and 20 following the GR 5 .
- 3 At the small wooden promontory, go down towards Nessonvaux.
- 4 After going down the stairs and crossing the small pedestrian bridge, turn right.
- 5 At the crossroads,
 1. If you want to reach the station:
turn left, cross the Vesdre and go up to the left towards the station following the GR 5 signposting  then GR 573 at the next crossroads .
 2. If you continue directly with section 6, continue straight on the GR 573 signposting .

Find **accommodation** on **pages 39-40**
and **activities** on **pages 30-37**




	km		DIFFICULTY	SIGNPOSTING
 6	6,1	1H30	● ● ●	
 7	7,4	2H00	● ● ●	



**'Gare de Nessonvaux' (Station) -
'Gare de Trooz' (Station)**

Signposting

GR 573 

**Possibility of doing the whole of
this section by train:**

Line 37

Nessonvaux - Trooz

• **Nessonvaux - Trooz**


1 train per hour

Timetable and prices: www.belgiantrain.be



**'Gare de Trooz' (Station) -
'Gare de Chaudfontaine' (Station)**

Signposting

GR 573 

**Possibility of doing the whole of
this section by train:**

Line 37

Trooz - Chaudfontaine

• **Trooz - Chaudfontaine**

1 train per hour

Timetable and prices: www.belgiantrain.be

By train



'Gare de Chaudfontaine' (Station) - 'Gare de Liège-Guillemins' (Station)

Duration

10 minutes

(1 train/hour connects Chaudfontaine station to Liège-Guillemins station on line 37).

Take advantage of your arrival in Liège to visit the city

Discover the unmissable sights of the city of Liège in our special Liège City Brochure on visitwallonia.be/destinations

Each hiking itinerary found in this brochure can also be found on the Cirkwi.com site and also our site visitwallonia.be/carfree.

How to use it and what information to find?

The Cirkwi site's cartographic platform lays out the many tourist activities on offer (walks, hiking trails, tourist circuits, points of interest, etc.) to cater for various groups.

Cirkwi's site offers more than 25,000 hikes, walks and tourist routes in France and Belgium and 300,000 places of interest offered mainly by tourist offices and other official tourism entities.

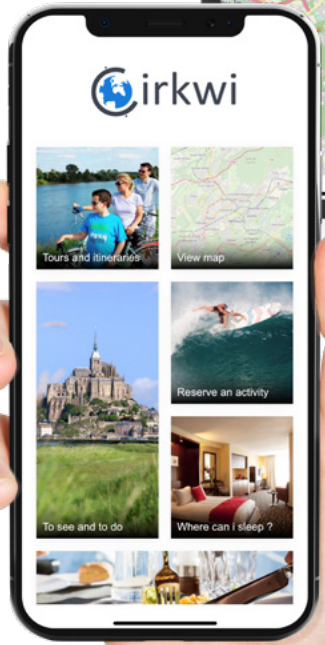
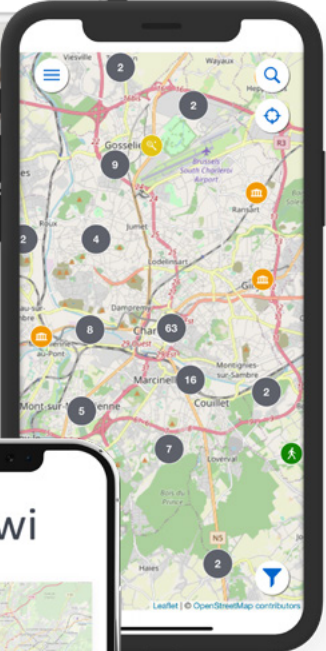
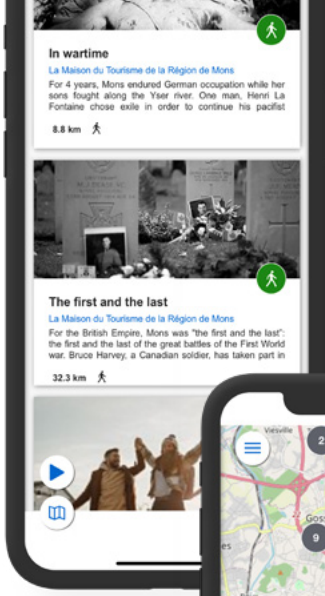
For each route you can download a PDF and a GPX file and open it in the Cirkwi application.



© WBT - D. Vesilov



© WBT - Charlotte Pirieau



Cirkwi App

Internet users looking for an on-board application that can guide them in real time, on the actual route, whether you're looking for a family day out or a walk requiring a more specific itinerary will find the solution with Cirkwi.

With or without internet, the Cirkwi mobile application embeds all their content, maps, texts, images, etc. This allows them to be used anywhere and in any weather.

It's the perfect app for discovering the best things to see and do around you.

Essential features

- Upload (maps, texts, photos...) before going hiking on your smartphone in order to use them without an internet connection
- Let the app guide you with its GPS system and its notifications
- Allow notifications when you approach a place that interests you
- Share your discoveries with your friends.

Download the app

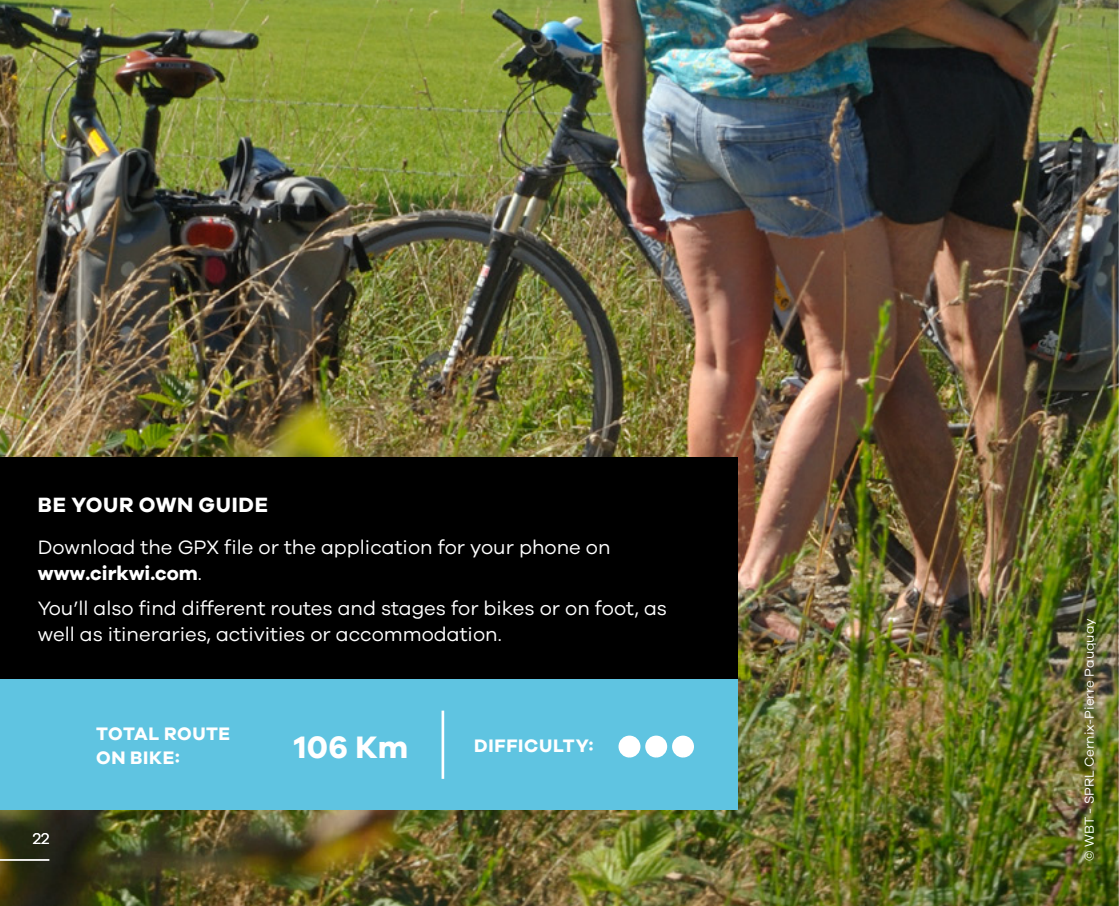




By bike

INFORMATION AND INSTRUCTIONS FOR USE OF POINTS-NOEUDS NETWORK

The systems of the 'points noeuds' network is very simple: each intersection is numbered and equipped with a beacon which includes the intersection number (point-noeud) and the arrows in the following numbered intersections. Follow the points-noeuds indicated on the following pages as your itinerary.



BE YOUR OWN GUIDE

Download the GPX file or the application for your phone on www.cirkwi.com.

You'll also find different routes and stages for bikes or on foot, as well as itineraries, activities or accommodation.

TOTAL ROUTE
ON BIKE:

106 Km

DIFFICULTY: ●●●

By bike



'Gare de Aachen' (Station) - 'Gare d'Eupen' (Station)

Duration

38 minutes

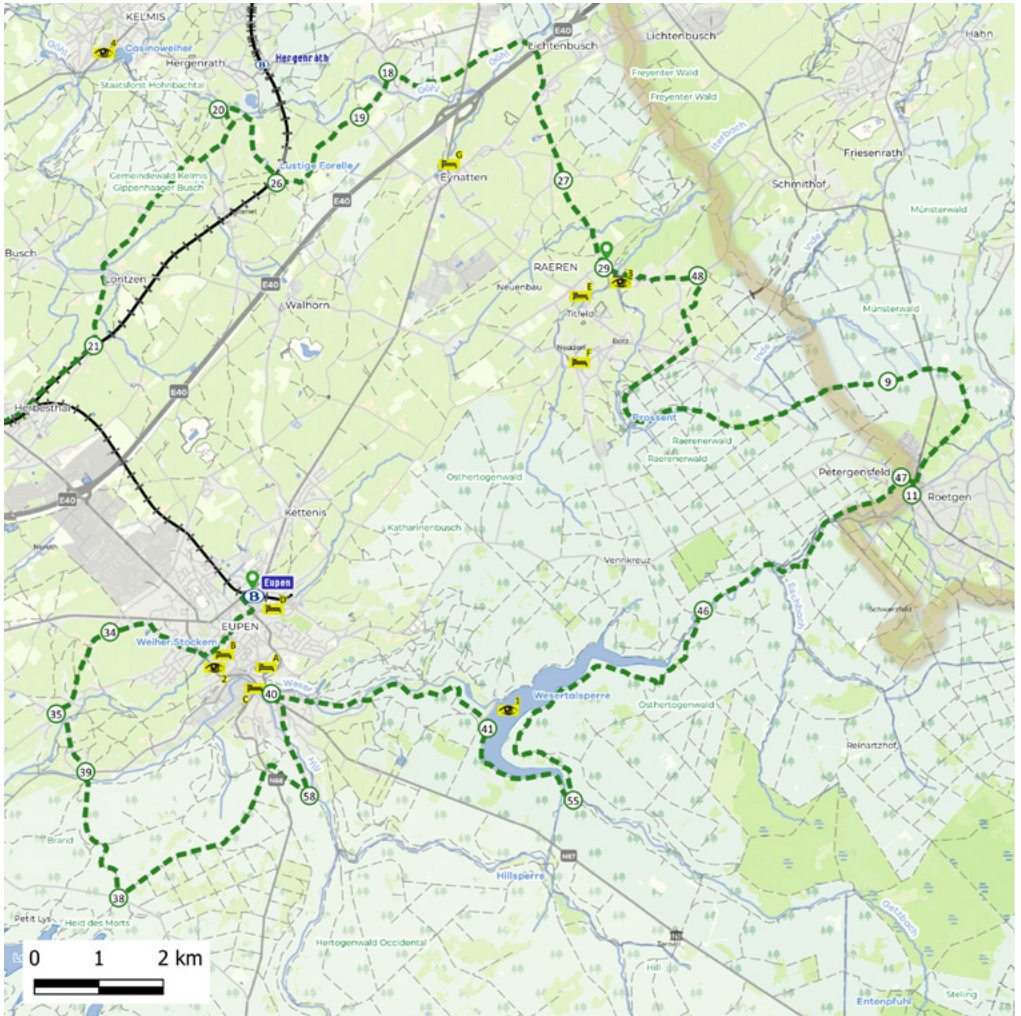
Take the train from Aachen to Welkenraedt (line 37) then from Welkenraedt to Eupen (line 49).

Frequency

1 train per hour

On your arrival, take the opportunity to visit the town of Eupen!





	km 43		3H35	DIFFICULTY		SIGNPOSTING	Follow the 'points-nœuds'
--	------------------------	--	-------------	-------------------	--	--------------------	------------------------------

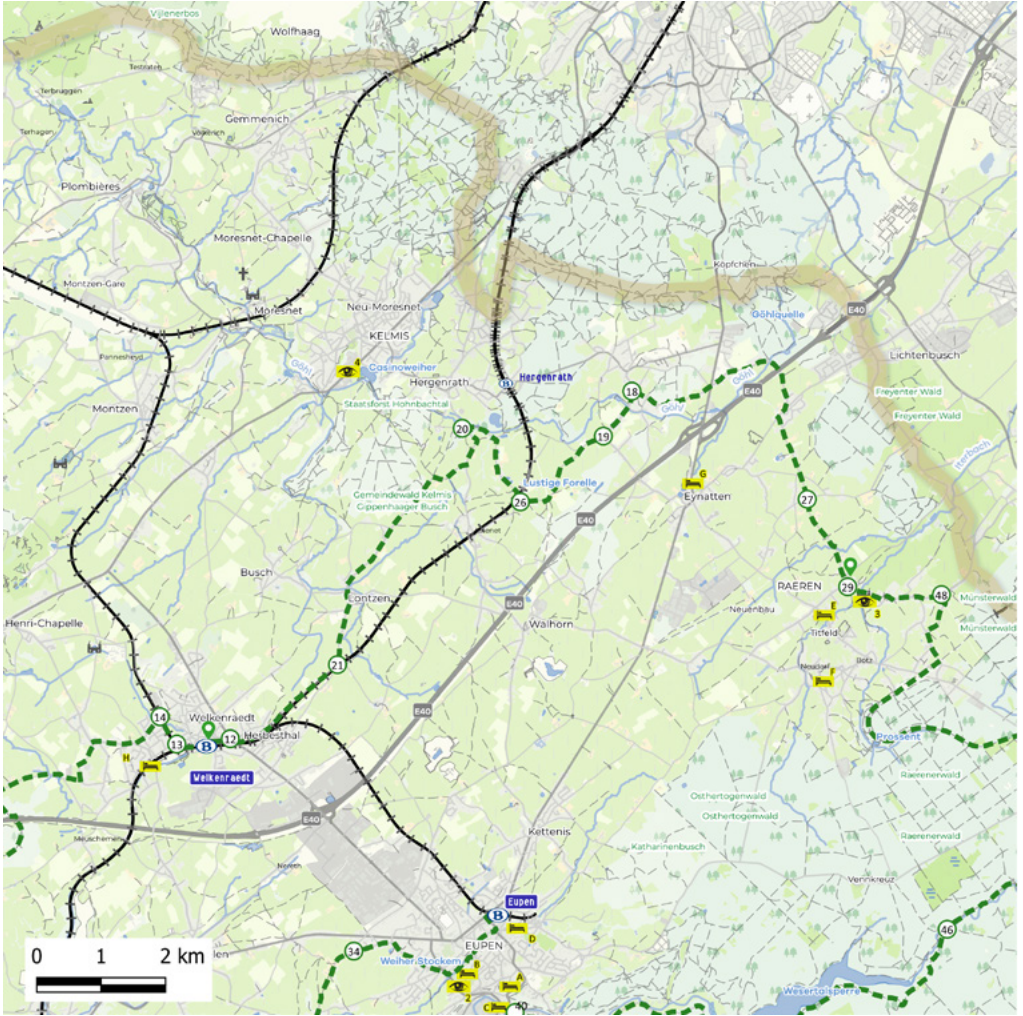
'Gare d'Eupen' (Station) - Raeren

- 1 At Eupen station, exit to the right and reach the main crossroads.
- 2 Walk left down 'Hookstrasse' to its intersection with 'Gosperstrasse'. At the crossroads, turn right and follow the direction of 'point-noeud' 34.
- 3 Follow 'points-noeuds' 34 - 39. Go up in the woods to the east of the Gileppe dam following 'points-noeuds' 38 - 58. (If you want to visit the dam, at point 38, follow 'points-noeuds' 61, 62 and 63.
- 4 Follow 'points noeuds' 40 - 41- 55 - 46 - 47 which take you along the Vesdre and the Eupen dam.
- 5 Follow point-noeuds 11 to join the 'Vennbahn' and then 'point-noeud' 9.
- 6 Continue down the 'Vennbahn', pass Raeren station and at the next junction leave the 'Vennbahn' to the left and follow junctions 48 and 29.

Find **accommodation** on **pages 39-40** and **activities** on **pages 30-37**



© WBT - Sophie Dekkers



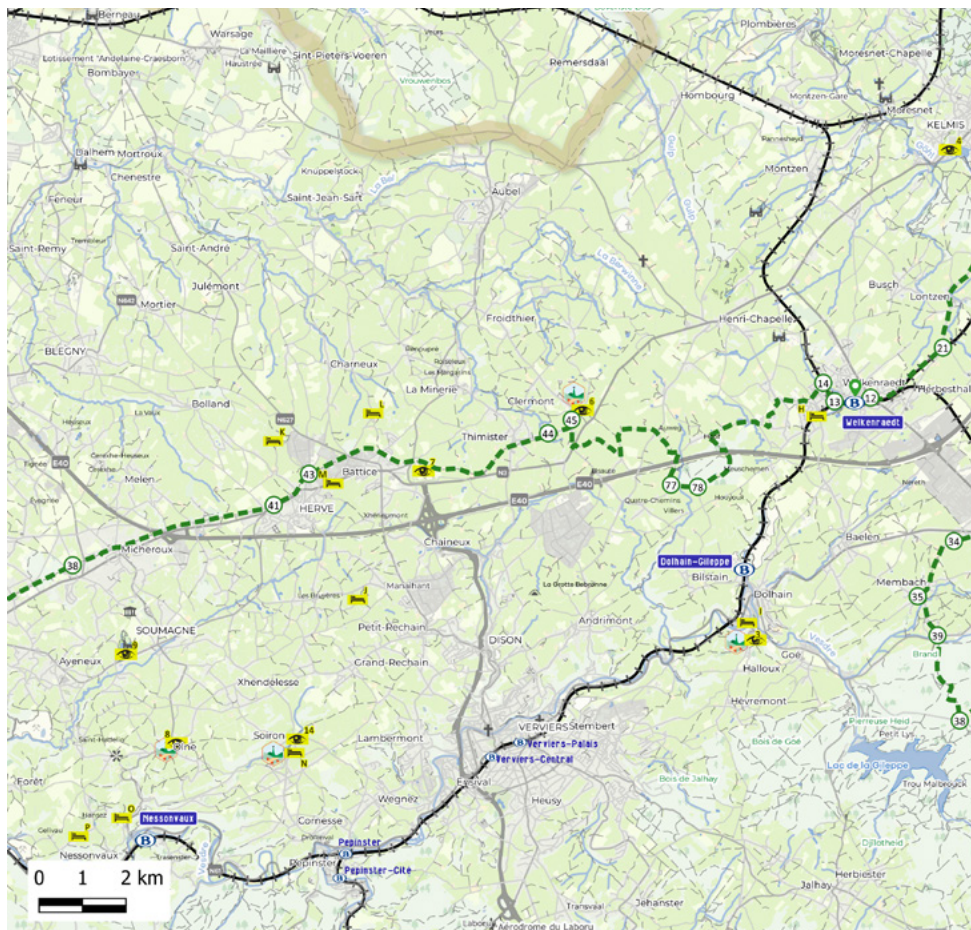
	km 18		1H30	DIFFICULTY		SIGNPOSTING	Follow the 'points-nœuds'
--	------------------------	--	-------------	-------------------	--	--------------------	------------------------------

Raeren - 'Gare de Welkenraedt' (Station)

- 1 From point 26, you can follow the sign 'Welkenraedt gare'. From 'point-noeud' 29, follow 'points-noeuds' 27 - 18 - 19 - 26 and join the Gueule valley at 'point-noeud' 20.
- 2 Follow 'point-noeud' 21 then 12. You pass the old Herbesthal station before arriving at Welkenraedt station.

Find **accommodation** on pages **39-40**
and **activities** on pages **30-37**

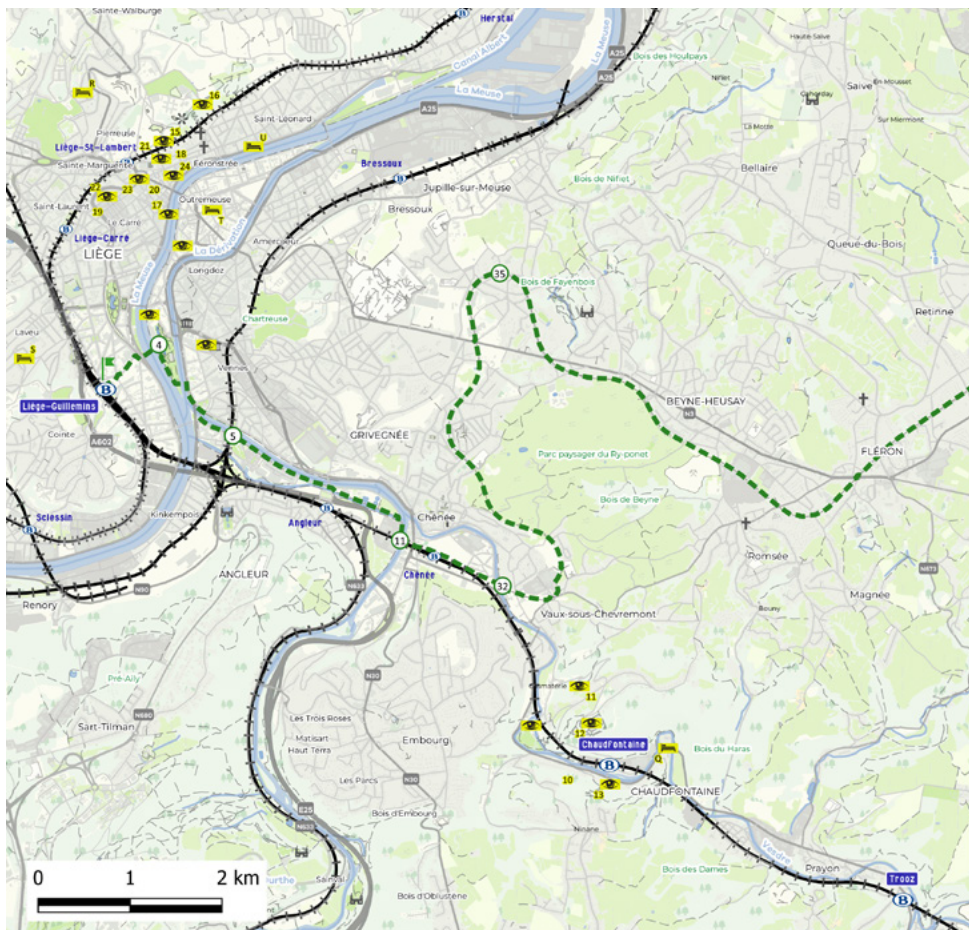




'Gare de Welkenraedt' (Station) - 'Gare de Liège-Guillemins' (Station)

- 1 On the left when leaving the station, follow 'points-noeuds' 13 -14 - 78 - 77 - 45 and 44 where you join the old line 38.
- 2 Follow 'points-noeuds' 43 - 41 - 38.

4 km 45	 2H30	DIFFICULTY 	SIGNPOSTING Follow the 'points-nœuds'
-----------------------------	-----------------	-----------------------	--



- 3 Follow 'points-noeuds' 35 - 32 and 11 where you arrive along the Ourthe, after, follow 'points-noeuds' 5 and 4.
- 4 At 'point-noeud' 4, cross the footbridge over the Meuse towards 'Gare des Guillemins' (Station) via Rue du Paradis.

Take advantage of your arrival in Liège to visit the city

Discover the unmissable sights of the city of Liège in our special Liège City Brochure on visitwallonia.be/destinations

Possibility of doing the whole of this section by train:

Line 37

Welkenraedt - Liège-Guillemins (1 train per hour)

Timetable and prices: www.belgiantrain.be



Discover

Find all these points of interest on the different maps thanks to the corresponding numbers. You can also discover them in the **CIRKWI** application.

1 Lake Eupen and the Vesdre Dam

Located at the confluence of the Vesdre and the Getzbach in Eupen, the Barrage de la Vesdre (dam) is the third largest drinking water reservoir in Belgium. Around its banks, tourists can enjoy a breathtaking view of the building and the surrounding forests. A large playground is also available for the youngest visitors. An educational trail on the water and the forest (2,5 km), charmingly accompanied by a character called «Foxy», panels explain the typical fauna and flora of the region. For the more adventurous: check out the highest climbing wall in the Euregio, abseiling or thrilling death rides.

Spabrunnen • 4700 Eupen
www.ostbelgien.eu

2 Ikob, Musée d'Art Contemporain d'Eupen (Museum of Contemporary Art)

Its cross-border position allows you to discover the works of international artists through changing exhibitions that reflect current trends in art. In addition, this contemporary art space has an important collection made up of works by nationally and internationally renowned artists such as Jonathan Meese, Guillaume Bijl, Jacques Charlier, Patrick Everaert.

Rotenberg 12b
4700 Eupen
www.ikob.be

3 Château de Raeren et Musée de la Poterie (Castle and Pottery Museum)

The Château de Raeren, typical of eastern Belgium, is a magnificent building surrounded by water. In the 14th and 15th centuries, it was one of the most important pottery centres. The village lived and thrived from this art and the ceramics spread all over the world. Inside, you can admire more than 2,000 objects retracing 500 years of the history of Rhine ceramics as well as contemporary ceramics.

Burgstrasse 103 • 4730 Raeren
www.toepfereimuseum.org

4 Musée Vieille Montagne à La Calamine

Formerly the Gueule Valley Museum, the Vieille Montagne Museum is located in a magnificent Art Nouveau building. The permanent exhibition is dedicated to the calamine, a mineral that closely links the history of the village of La Calamine, the Vieille-Montagne Society and Moresnet-neutre.

Chaussée de Liège 278
4720 Kelmis
www.mvm-kelmis.be

5 Limbourg: One of the Most Beautiful Villages in Wallonia

Capital of the former Duchy of Limburg, this fortress, strategically located on the banks of the Vesdre River between the Hervian bocage and the Ardennes massif, was once deemed impregnable. The preserved centre is classified as an 'exceptional heritage of Wallonia', like lots of the region's monuments, such as the Gothic church of Saint-Georges which is part of an architectural heritage that transports you into the Middle Ages, as does the the Espace ARVÔ which has a model of the village in 1632, the castles, and the fountain of the Virgin...

beauxvillages.be



1

© WBT - Paarléries



5

© WBT - M. Vander Linden



3

© Christian Charlier



3

© Christian Charlier



6 Clermont-sur-Berwinne, one of the Most Beautiful Villages in Wallonia

Stroll through its narrow streets but also via the RAVeL to discover the charms of its scenic surroundings. In the middle of meadows and fruit trees, Clermont-sur-Berwinne is largely centered around its listed church and many other old dwellings of different architectural styles, including a magnificent 19th century town hall made of stone and brick. There is also a discovery circuit guiding you through the heritage of the village. Visit the Remember Museum 39-44 and its collection linked to the Second World War.

beauxvillages.be

7 Fort de Battice

Located just 17 km from the border, Fort Battice was one of the first positions attacked by the German army on May 10, 1940. Built in the 1930s, its garrison was made up of 750 men, 34 of whom lost their lives during the 12 days of enemy siege.

Route d'Aubel
4651 Battice
www.fort-battice.net

8 Olné, one of the Most Beautiful Villages in Wallonia

The calmness of Olné contrasts with the agitation that reigned in the past, due to the activities of earthenware, drapery, cloutery and quarries. The Mosan Renaissance style buildings of the 17th and 18th centuries, mixing brick and stone, bear witness to this period. In the middle of the meadows and orchards of the Pays de Herve, Olné is the ideal starting point for a walk.

beauxvillages.be

9 Provincial Region of Wégimont

Located in a wooded and flowery setting of 22 hectares on the edge of the 'Plateau de Herve', the Provincial Domain of Wégimont is the ideal place to relax and enjoy a number of activities. Discover: ponds for canoeing or fishing, multisport areas, arboretum, barbecue areas, playground, heated swimming pools, mini-golf...

Chaussée de Wégimont 76
4630 Soumagne
www.provincedeliege.be/wegimont

10 Château des Thermes de Chaudfontaine (Spa Retreat)

The 'Espace Thermal' invites you to enjoy the benefits of hydrotherapy through its facilities where harmony and relaxation reign: its outdoor thermal bath at 32°C with hydrojets, its indoor thermal water swimming pool, its jacuzzis, its saunas, hammams and caldarium, its infrared, salt and ice cabins, its relaxation rooms and its Zen garden.

Rue Hauster 9
4051 Chaudfontaine
www.chateaudesthermes.be

11 Western City

Tombstone is a three-key vacation rental with a typical decor and atmosphere that offers you all the modern comforts. This little nugget of cowboy life welcomes you to Western City, an American West inspired attraction offering, among a multitude of activities, a real saloon, horseback riding and a show every Sunday from late May to early October.

Rue du Bois de la Grue 2
4050 Chaudfontaine
www.western-city.be

12 Fort aventure

Have you always dreamed of participating in Fort Boyard (French reality show)? Come and live a similar experience in Chaudfontaine! The fort invites you to challenge yourself and have fun with friends or family! Test your physical and intellectual abilities by taking up the many challenges of the fort: game rooms, 3D labyrinth, survival activities, rappelling and zip line await you. You will be supervised by experienced instructors in complete safety during the day.

Rue du XIII Août 42 • 4050 Chaudfontaine
www.fortaventurechaudfontaine.com

14 Soiron, one of the Most Beautiful Villages in Wallonia

As you turn around the alleys you'll discover a Mosan-style habitat, a beautiful church, two castles and, more unusual, a thistle dryer. Highlights in particular – the imposing 18th century Saint-Roch church, Château Soiron in early 18th century Louis XV style and the late 16th century Château Sclassin.

beauxvillages.be

16 Les Côteaux de la Citadelle

In the heart of Liège, the Côteaux de la Citadelle are a paradise for the city dweller! Fauna and flora, calm and relaxation surprise the walker in an urban area.

Sentier des Aubépines • 4000 Liège
www.visitezliege.be

18 Aquarium-Museum

At the Aquarium-Museum, you'll discover a rich collection of living aquatic animal species and inert specimens of great scientific, historical, artistic or heritage value.

Quai Édouard Van Beneden 22
4020 Liège
aquarium-museum.uliege.be

13 Golf Miniature de Chaudfontaine

The 36.6 miniature golf is located in the Sources de Chaudfontaine park and will make you spend a fun moment with your family. This activity offers tracks integrated in a landscaped path composed of plants, shrubs and flowers during spring and summer. The water theme of the site is suggested by decorative elements in galvanized steel.

Av. des Thermes 78 bis
4050 Chaudfontaine
www.visitchaudfontaine.be/mini-golf/

15 Montagne de Bueren (tourist attraction)

The Montagne de Bueren (in the top 10 of the most extraordinary staircases in the world), is a staircase of 374 steps with an inclination reaching 30%. This site is constantly open to the public and is at the centre of major events, such as 'La Nocturne des Coteaux de la Citadelle' and 'Bueren en fleur'. It's one of the must-sees when visiting the city of Liège. At the foot of the 'Bueren mountain', Brasserie C is dedicated to Walloon's delectable local produce and regional beers.

Rue Montagne de Bueren • 4000 Liège
www.visitezliege.be

17 Liège River Shuttle

Want to discover Liège away from the traffic? From April to October, you can enjoy the city from another angle thanks to the river shuttle on the Meuse. For only €1 per stop, you easily reach the various sites and emblematic tourist attractions of the Cité Ardente. It is pretty convenient for tourists... and for residents of Liège who can use the shuttle as a means of transport.

Quai de la Goffe 13 • 4000 Liège
www.navettefluviale.be



© François Delfosse



© CGT - Arnaud Siquet



© WBT - Denis Erroyaux



© WBT - Sophie Dakkers



© Aquarium - Muséum Universitaire de Liège



19

© MTCW



20

© WBT - Bruno D'Almonite



20

© WBT-Oliver Baumgartl



22

© Charlier Christian

19 Public Transport Museum of Wallonia

The Museum of Public Transport in Wallonia invites you to (re)discover the machines that used to motor on our streets. Travel back in time and explore today's mobility and tomorrow's challenges. Installed in a former tram depot, the museum houses around 40 varied vehicles: horse-drawn carriages, electric trams or trolleybuses. They illustrate the history of mobility from the 18th century to the present day.

Rue Richard Heintz 9
4020 Liège
www.musee-transport.be

20 Musée et Parc de La Boverie (Art museum and park)

With its permanent collections and temporary exhibitions of international stature, the Musée de la Boverie is an essential cultural site in the Cité Ardente. This eclectic building dating from the beginning of the 20th century is a lasting legacy of the great 1905 Universal Exhibition.

Parc de la Boverie 3
4020 Liège
www.laboverie.com

21 Musée de la Vie wallonne (Museum of Walloon Life)

In the heart of Liège, the Museum of Walloon Life invites you to discover the history and life of the Walloons from the 19th century to the present day. This museum is housed in the convent of the Friars Minor dating from the 13th century. It invites the visitors to explore life in Wallonia under all its facets.

Cour des Mineurs
4000 Liège
www.provincedeliege.be/viewallonne

22 La Cité Miroir (Contemporary art space)

Located in the former baths of the Sauvenière in Liège, the Cité Miroir is a cool space for exhibitions, shows and cultural expression. The former thermal baths of La Sauvenière became La Cité Miroir in 2014. A place of education, debate and culture dedicated to citizenship, the work of memory and the dialogue of cultures. Located in the heart of the city, this building and its majestic proportions are impressive in their Bauhaus style. It's the perfect space for conferences, theatre, music, debates, temporary and permanent exhibitions.

Place Xavier Neujean 22 • 4000 Liège
www.citemiroir.be

23 Archéoforum de Liège (Archeological site)

The Archeoforum of Liège is an exceptional archaeological site of 3725 m² located under the Place Saint-Lambert (square). Discover 9000 years of history in the city centre. The true «historic heart» of the Cité Ardente, the place reveals the traces of a multi-millennial past. An unusual route retraces the history of the City in a modern and educational setting.

Place Saint-Lambert
4000 Liège
www.archeoforumdeliege.be

24 Aventures Liège (Digital game in the city)

At the same time as having fun, this digital application for young and old allows you to learn some mysteries of the 'Cité Ardente' and its historic heart. Puzzle, deduction, a game of 7 errors, observations on the ground... many animations have been designed to serve two enigmas: The Golden Cane and the Ring of Saint-Lambert.

www.visitezliege.be

Taste of Wallonia

Brasserie Eupener Brauerei d'Eupen (Eupen Brewery)

Hütte 48
4700 Eupen
info@cabane-eupen.be

Cidrerie, pressoir et distillerie Atelier Constant-Berger

Rue de Herve 102b
4651 Herve
atelier-constantberger.be

Distillerie Radermacher

Spitalstrasse 50
4730 Raeren
www.distillerie.biz

La Ferme Colyn (Farm)

Rue Elvaux 111
4650 Herve
 [Lafermecolyn](https://www.facebook.com/Lafermecolyn)

Fromagerie Göhltaler (Eynatten)

Rothausstraße 61
4731 Raeren
www.goehltaler.be

La Brasserie Artisanale de la Fabrique (Craft Brewery)

Rue de la Fabrique 3
4632 Cerexhe-Heuseux
www.brasserie-boca.be

Siroperie Charlier

Counhaye 14
4841 Welkenraedt
www.siropcharlier.be

La Ferme Lux (Farm)

Sells butter, creams, milk, yogurts, meat, charcuterie...
Rue du Centre 64
4050 Ninane
lafermelux.be

Matacou Vineyard

www.limbourg-tourisme.com

Une Gaufrette Saperlipopette

Rue des Mineurs 17
4000 Liège
une-gaufrette-saperlipopette.be

Chocolaterie Demaret

Voie de la Chocolaterie 89
4651 Battice
www.chocolatierdemaret.be

Food Market La Grand Poste et Brasserie de Liège (Brewery)

Quai Sur-Meuse 19
4000 Liège
bdl.beer

Fromagerie du Vieux Moulin

Sur la Commune 14
4651 Battice
fromagerie-du-vieux-moulin.be

Fromagerie du Plateau

Rue de Charneux 32
4650 Herve
www.meuleduplateau.be

Where to Stay

Find this accommodation on the different maps thanks to the corresponding letters. You can also discover them in the **CIRKWI** application.



When you arrive at Eupen station

A Gîte-auberge Kaleo Eupen

Judenstraße 79
4700 Eupen
www.kaleo-asbl.be

B Sleepwood Hotel

Neustraße 61
4700 Eupen
sleepwood.be

C Ambassador Hotel Bosten

Haasstraße 81
4700 Eupen
www.ambassador-bosten.com

D Kloster Heidberg

Bahnhofstraße 4
4700 Eupen
www.klosterheidberg.be

After Stage 2 by bike (Eupen-Raeren)

E Hotel-Restaurant Zum Onkel Jonathan

Hauptstrasse 49
4730 Raeren
www.onkel-jonathan.be

G Hôtel Restaurant Tychon

Aachener Strasse 30
4731 Eynatten
hotel-tychon.be

F Maison d'hôtes Landhauszimme

Kreuzstraße 28
4730 Raeren
www.landhauszimmer.eu

After Stage 3 by bike (Raeren-Welkenraedt)

H Chambre d'hôtes BNB Gypsy Home

Rue de l'Yser 166
4840 Welkenraedt
gypsyhome.business.site

After Stage 2 on foot (Eupen-Dolhain)

I Gîte Sur les Remparts

Sur les Remparts 20
4830 Limbourg
surleremparts.be

After Stage 3 on foot (Dolhain - Manihant)

J **Chambres d'hôtes
Les Coteaux du Vinave**
Vinave 29
4650 Herve
www.coteauxduvinave.be

K **La Ferme de Berwausault**
Voie des Hougnes 42
4651 Herve
www.chambresherve.be

L **Chambres d'hôtes Côté Verger** 
Bouxhmont 98
4651 Battice
www.coteverger.be


M **Hôtel Smart bnb**
Rue de Herve 133a
4651 Herve
www.smart-bnb.eu

After Stage 4 on foot (Manihant - Soiron)

N **Chambres d'hôtes Un air de bourlingueurs**
Bouhaye 82
4861 Pepinster
www.bourlingueurs.be

After Stage 5 on foot (Soiron - Nessonvaux)

O **Maison d'hôtes
Aux Quatre Bonniers**
Gelivaux 5
4877 Olne
www.quatrebonniers.be

P **Chambres d'hôtes** 
L'Aube des Saisons
Rue Hansez 22
4877 Olne
aube-des-saisons.be


After Stages 6 and 7 on foot (Nessonvaux - Chaudfontaine)

Q **Hôtel Il Castellino**
Avenue des Thermes 147
4050 Chaudfontaine
ilcastellino.be

When you arrive at Liège

R **B&B Matin tranquille**
Rue Auguste Donnay 74
4000 Liège
matintranquille.be

S **Chambres d'hôtes** 
Wallons-nous Dormir
Rue des Wallons 228
4000 Liège
www.wallonsnousdormir.be

T **Auberge de jeunesse de Liège** 
Rue Georges Simenon 2
4020 Liège
www.lesaubergesdejeunesse.be/liege

U **Mercure Liège City Centre**
Rue Saint Léonard 182
4000 Liège
all.accor.com

THE « CLÉ VERTE » AND « BIENVENUE VÉLO » LABELS



Clé Verte (or Green Key in English) is an international eco-label that merits tourist establishments for their approaches and their performance in terms of the environment. In concrete terms, establishments with the Clé Verte label have reduced their ecological footprint by limiting their energy and water consumption, as well as their waste production; using more environmentally friendly cleaning products; by offering organic, local, fair trade food products, etc. And this, without the experience or comfort of their customers or their guests being affected. For more information on the label, please consult the website www.green-key.be.



For a cyclist, choosing a « **Bienvenue vélo** » establishment is opting for a place where it's great to stop, and the hosts are delighted to see you arrive with your bike. Gîtes, bed and breakfasts, hotels... put at your disposal a room to store your bike, repair tools and cleaning equipment, as well as maps and tourist routes. But «Bienvenue vélo» also includes museums, tourist attractions, restaurants and brasseries that welcome you with your 2 wheels with the same pleasure. The "Bienvenue vélo" label is synonymous with services and equipment adapted to cyclists in Wallonia!
More info on visitwallonia.be/bikeswelcome.

Notes

Follow us

 **whybelgium**

 **BelgianTouristOfficeWallonia**

#VisitWallonia



© WBT - Denis Erroyaux

VISITWallonia.be

The Ultimate Belgian Getaway

This brochure is published by Wallonia Belgium Tourism (WBT) Company Number: 0888.366.085.

Rue du Marché aux Herbes, 25-27 – 1000 Brussels (Head Office) / Avenue Comte de Smet de Nayer, 14 – 5000 Namur (Operational Department) Chief Editor: Etienne Claude, WBT Director General • Coordination and Publishing: S. Burgeon, S. Delcourt • Design and Layout: Lielens • In collaboration with Hike Up and Railtrip.Travel • All information, contained in this brochure has been compiled with maximum attention to current facts and details, correct at the time of publishing. This brochure is not contractual and the editor cannot be held responsible. Any errors and involuntary omissions or subsequent modifications are not the responsibility of Wallonia Belgium Tourism.