



Car Free Style

By train, on foot or by bike

From Arlon to Libramont

© WBT - Hike UP / Railtrip travel



In collaboration with

Railtrip.travel



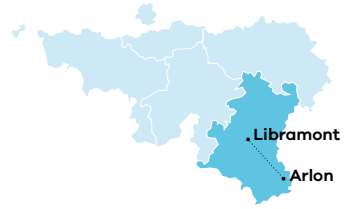
This brochure provides all you need for a few days in Wallonia without a car.

It forms part of a series of interconnectable routes. By combining these short stays, you'll have an easy to follow way of spending wonderful sustainable adventures in Wallonia. These itineraries always start from a station with the following options to continue the train and by bike or by train and on foot.

Travelling in **slow tourism** mode gives you time to enjoy the landscapes, take in surrounding nature, local products, visits and warm hospitality.



From Arlon to Libramont



Between Gaume, its lakes and forests

Our car free itinerary in the Belgian province called **Luxembourg** (the largest one) is also the least populated. It is also **the greenest** region with around **96% of its land** taken up with forests and fields.

You start the journey in **Arlon**, the region's capital, one of Belgium's three oldest cities spanning over 2000 years of history. It sits in a strategic position at the crossroads of two important roman roads: the road from Reims to Trier and the road from Metz to Tongeren. Today the town is best known for its **Archeological Museum**, its Roman remains and the annual Gallo Roman weekend.

After taking the train from Arlon to Marbehan, you will be able to explore the **Gaume** region, also famous for its sausage, its Gaume pâté, its hilly landscapes and its yellow stones. Belgian Lorraine is bordered **to the north by the Ardennes, to the east by the Pays d'Arlon, to the south by the French region of Lorraine and to the west by the French region of Champagne-Ardenne**. This little corner of Belgium has a uniquely southern air.

Following that, you'll head for **Neufchâteau** and its region at the gates of the Anlier Forest. The lake there is a great place to relax in a protected nature reserve. Onwards to **Libramont** where you'll discover a region with **28 villages** and hamlets, a modern centre and stunning landscape as far as the eye can see. There is also a famous agricultural fair on the last weekend of July, which attracts 160,000 visitors. It's also a region with numerous river sources: Sûre, Vierre, Lesse, Lomme and the Western Ourthe...

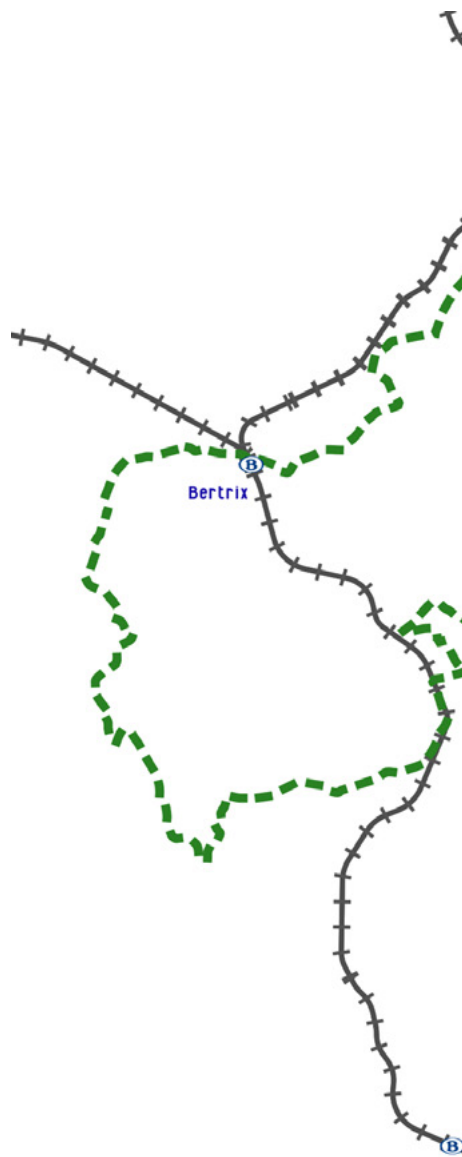


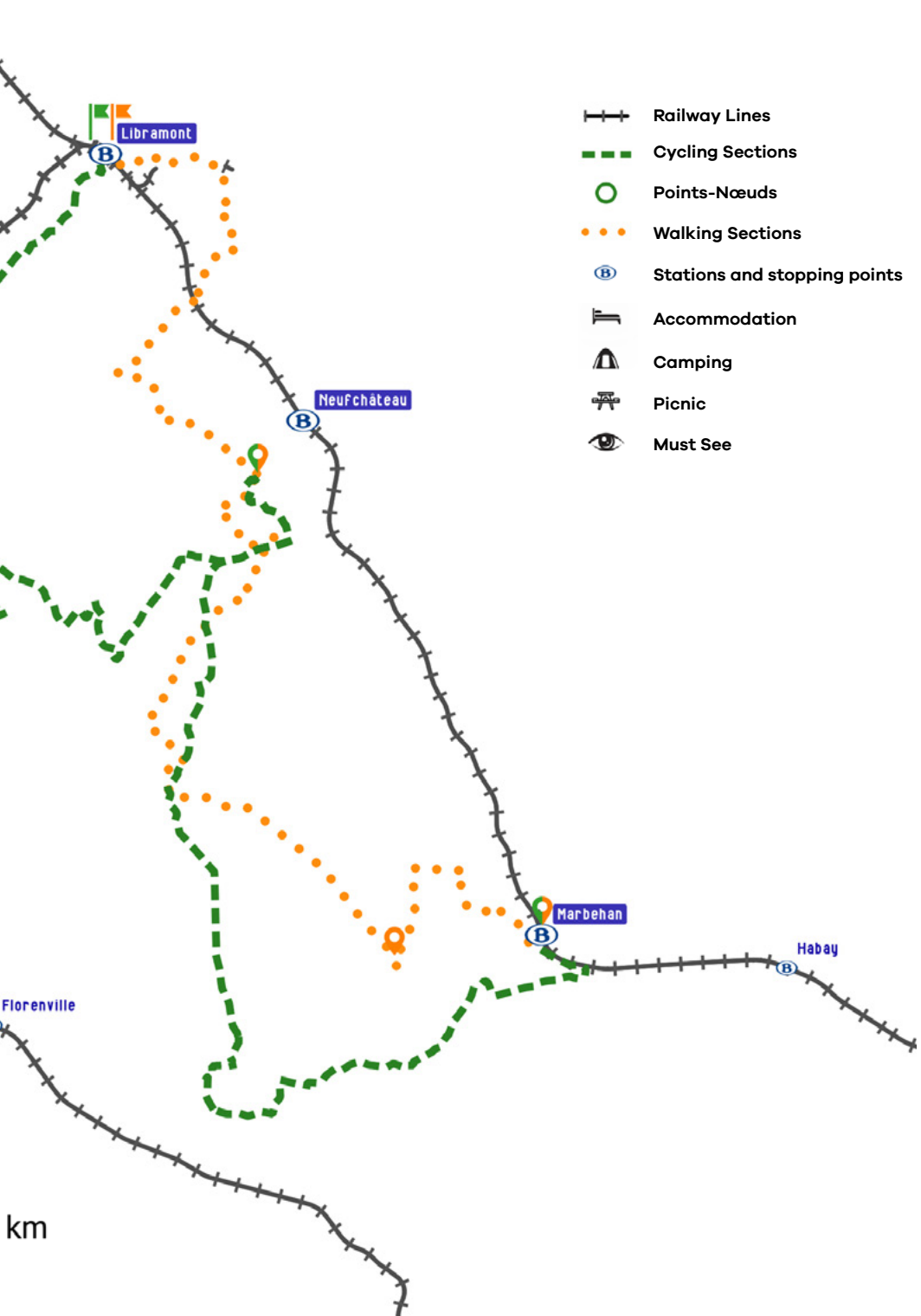
General map & itineraries



© WBT - Charlotte Princen

Find all our car-free itineraries on
visitwallonia.be/carfree







By train



Stages by train

What's the concept of this slow tourism route?

It's a combination of train journeys and sections to be taken on foot or by bike. The different stages proposed are in accordance with the accommodation and sights suggested in this route. The sections can of course be combined with the train depending on the desired pace. Stations are available at pretty much every section.

#1

Starting point from Arlon on line 162

Between Arlon and Libramont on line 162:

- 1 fast train per hour serves stations Arlon, Marbehan and Libramont
- 1 train every two hours connecting Arlon, Marebehan, Neufchâteau and Libramont

PRICES & INFO

On all these lines, it is possible to travel on-board with your bikes:
€4/bike/journey + ticket price.

Find more information, timetables and prices on
www.belgiantrain.be



Our tips for travelling more easily by train



- Buy your tickets via the **app**, **ticket offices** or **vending machines**.
If you travel by bicycle, don't forget that you will need to buy a ticket for **each bike** (4€ per trip).
On the vending machine the bike ticket is in 'supplement'.
Folding bikes travel free.
- Arrive early to have time to settle with your bike. Small stations are usually relatively well suited for transporting a bicycle from platform to the other. In the largest stations, traveling with a bicycle is more complex and requires a little more time.
- Wheel your **bike by hand** in the station, on the platforms and on the train.
- **Speak to the train conductor** before boarding: he will tell you, (often with a smile), if there are still places available and in which part of the train they are. More and more trains are **equipped with a pictogram indicating the location of the compartment/space dedicated to bicycles**.
- Remove your bags and do not place your bike against a toilet or in front of an access door.
- Bring a **lock**: you will be able to travel sitting down even if there is no space next to your bike.
- Travel outside peak hours, this will allow you more a more comfortable journey on the go.
- Anticipate getting off in advance this will save you stress and make it easier for other travelers to get off.
- **'Bruxelles-Central', 'Bruxelles-Chapelle' and 'Bruxelles-Congrès' (Station) are prohibited for bicycles.**
- Choose accommodation that has bed and bath linen and offers you a solution for breakfast (on site, pastry basket delivery, nearby bakery, etc.), so you can **travel light**.
- Make sure you can eat where you sleep or in the immediate vicinity. After a day of hiking or cycling, you will not necessarily want to get back in road for your evening meal.



On foot

BE YOUR OWN GUIDE

Download the GPX file or the application for your phone on www.cirkwi.com.

You'll also find different routes and stages for bikes or on foot, as well as itineraries, activities or accommodation.



TOTAL ROUTE
ON FOOT:

47,9 Km

DIFFICULTY: ●●●

On foot

 1 *By train*

'Gare d'Arlon' (Station) - 'Gare de Marbehan' (Station)

Duration

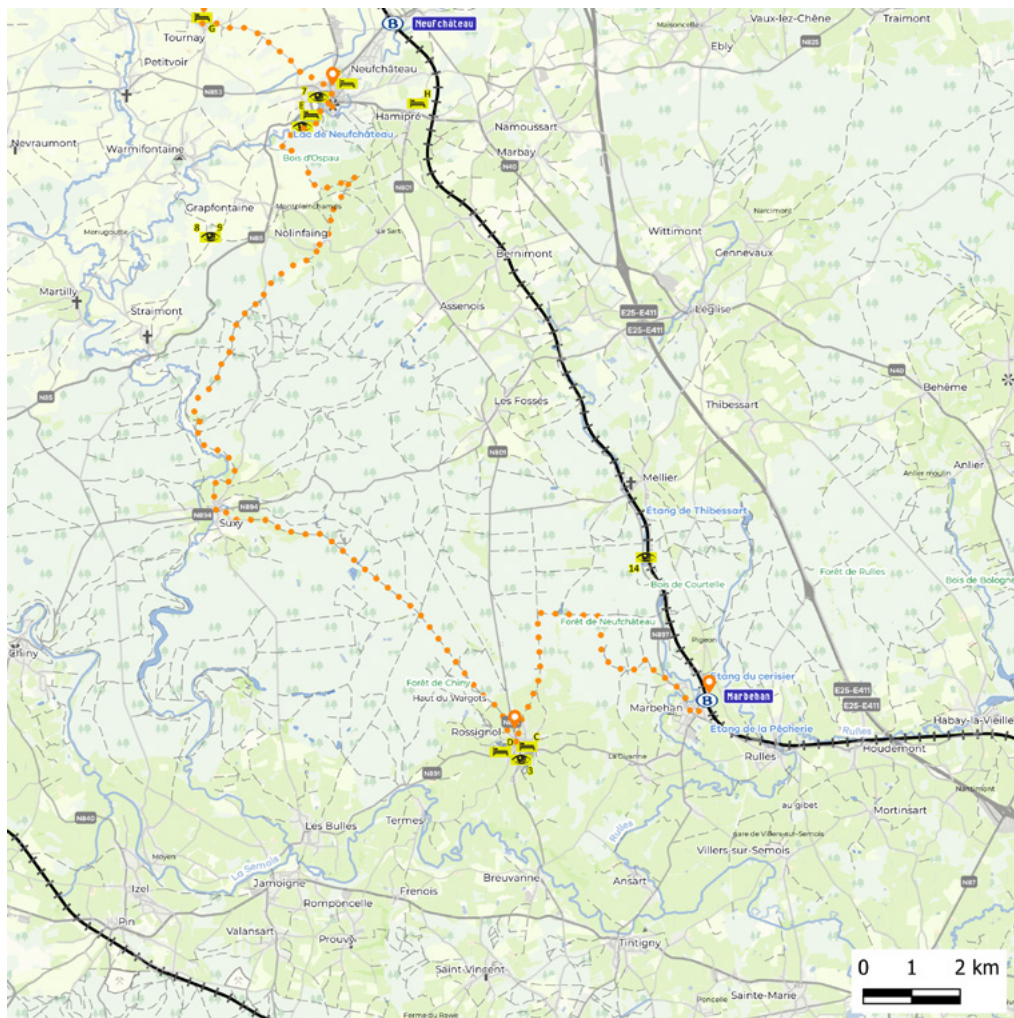
12 or 17 minutes


Before taking the train in Arlon, take the opportunity to visit the city's must-sees.

Frequency

Two trains per hour on weekdays and weekends.






	km		DIFFICULTY	SIGNPOSTING
 2	8,3	2H00	● ● ○	
 3	22,2	5H30	● ● ●	

2

'Gare de Marbehan' (Station) - Rossignol

Signposting

GRP 151 Belgian Luxembourg Tour 

With Marbehan station behind you, take the 'Grand-Rue' on your left. You are on the GRP 151. Follow the yellow and red signposting to Rossignol.

3

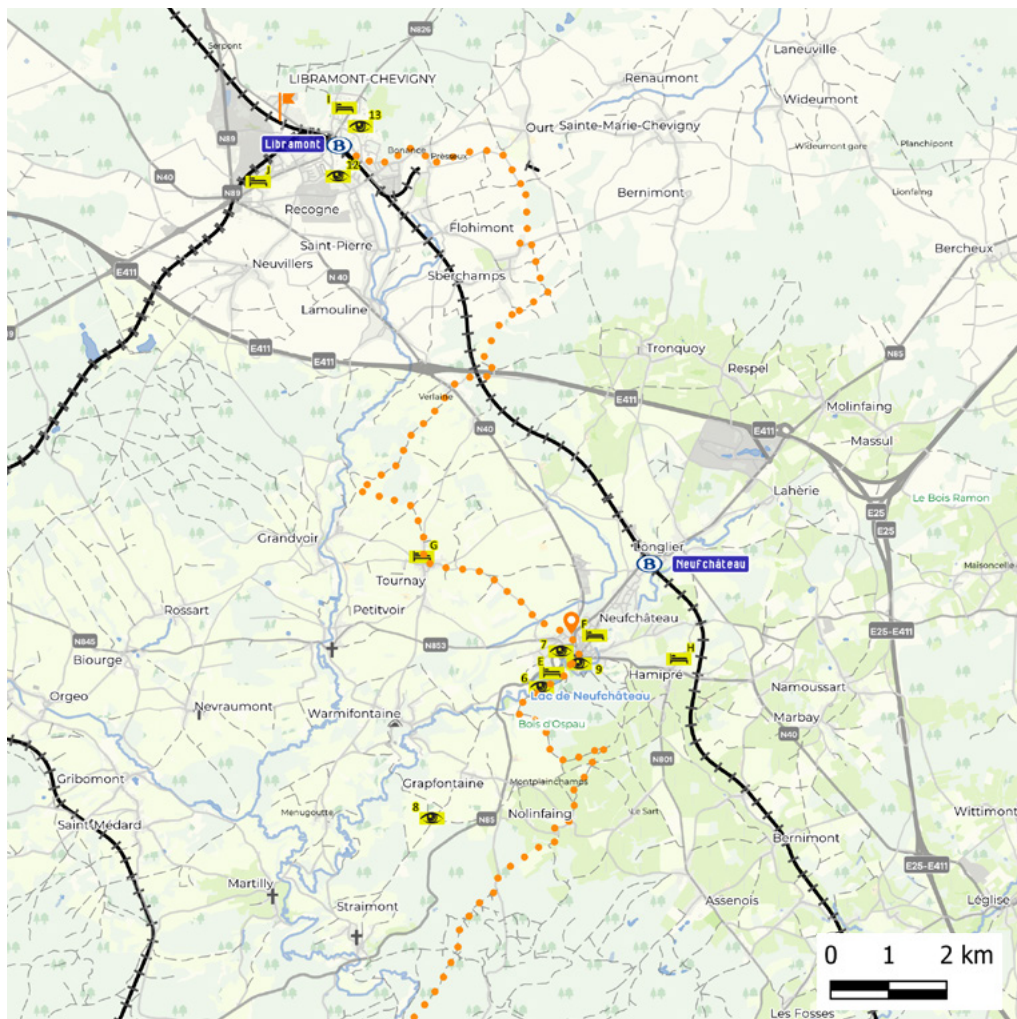
Rossignol - Neufchâteau (crossing Rue Franklin Roosevelt with Rue Lucien Burnotte)

Signposting

GRP 151 Belgian Luxembourg Tour 

When you are in Rossignol, the GRP 151 continues along 'Rue de la Chaussée Romaine'. Follow the GRP 151 until the intersection between 'Rue Franklin Roosevelt' and 'Rue Lucien Burnotte'.





	km 17,4		4H15	DIFFICULTY		SIGNPOSTING	
--	--------------------------	--	-------------	-------------------	--	--------------------	--

Neufchâteau (intersection of 'Rue Franklin Roosevelt' with 'Rue Lucien Burnotte') - 'Gare de Libramont' (Station)

Signposting

GRP 151 Belgian Luxembourg Tour 

When you are at the intersection between 'Rue Franklin Roosevelt' and 'Rue Lucien Burnotte',

- either continue the route using 'Rue Franklin Roosevelt' and follow the GRP 151 until the end of the route at Libramont station.
- or take 'Rue Lucien Burnotte' then avenue de la Gare to Neufchâteau station to take the train.

You can shorten your route by taking line 162

Line 162

Between Arlon and Libramont

- **Arlon, Marbehan and Libramont**

1 fast train per hour

- **Arlon, Marbehan, Neufchâteau and Libramont**

1 train every two hours

Travel time:

- **Arlon - Marbehan:**

12 or 17 minutes

- **Marbehan - Neufchâteau:**

9 minutes

- **Neufchâteau - Libramont:**

7 minutes

Timetable and price: www.belgiantrain.be

Find **accommodation** on **page 28**
and **activities** on **pages 24-26**

Each hiking itinerary found in this brochure can also be found on the Cirkwi.com site and also our site visitwallonia.be/carfree.

How to use it and what information to find?

The Cirkwi site's cartographic platform lays out the many tourist activities on offer (walks, hiking trails, tourist circuits, points of interest, etc.) to cater for various groups.

Cirkwi's site offers more than 25,000 hikes, walks and tourist routes in France and Belgium and 300,000 places of interest offered mainly by tourist offices and other official tourism entities.

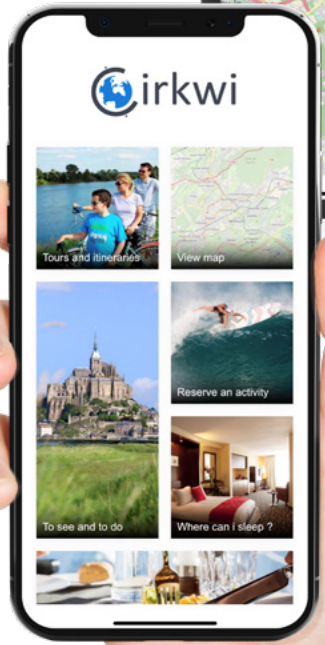
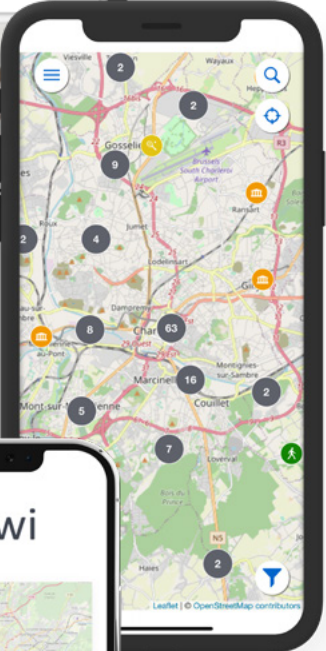
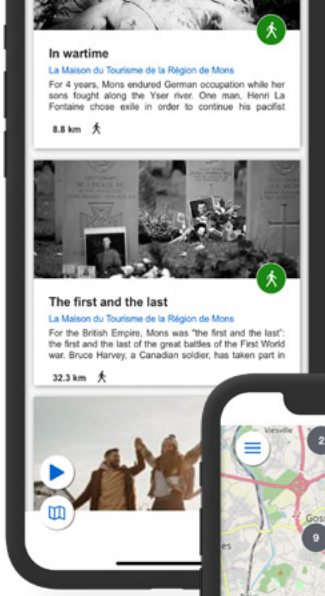
For each route you can download a PDF and a GPX file and open it in the Cirkwi application.



© WBT - D. Vesilov



© WBT - Charlotte Pirinon



Cirkwi App

Internet users looking for an on-board application that can guide them in real time, on the actual route, whether you're looking for a family day out or a walk requiring a more specific itinerary will find the solution with Cirkwi.

With or without internet, the Cirkwi mobile application embeds all their content, maps, texts, images, etc. This allows them to be used anywhere and in any weather.

It's the perfect app for discovering the best things to see and do around you.

Essential features

- Upload (maps, texts, photos...) before going hiking on your smartphone in order to use them without an internet connection
- Let the app guide you with its GPS system and its notifications
- Allow notifications when you approach a place that interests you
- Share your discoveries with your friends.

Download the app





By bike

INFORMATION AND INSTRUCTIONS FOR USE OF POINTS-NOEUDS NETWORK

The systems of the 'points noeuds' network is very simple: each intersection is numbered and equipped with a beacon which includes the intersection number (point-noeud) and the arrows in the following numbered intersections. Follow the points-noeuds indicated on the following pages as your itinerary.

BE YOUR OWN GUIDE

Download the GPX file or the application for your phone on www.cirkwi.com.


You'll also find different routes and stages for bikes or on foot, as well as itineraries, activities or accommodation.

TOTAL ROUTE
ON BIKE:

96,3 Km

DIFFICULTY: ●●●

By bike

 1 *By train*

'Gare d'Arlon' (Station) - 'Gare de Marbehan' (Station)

Duration

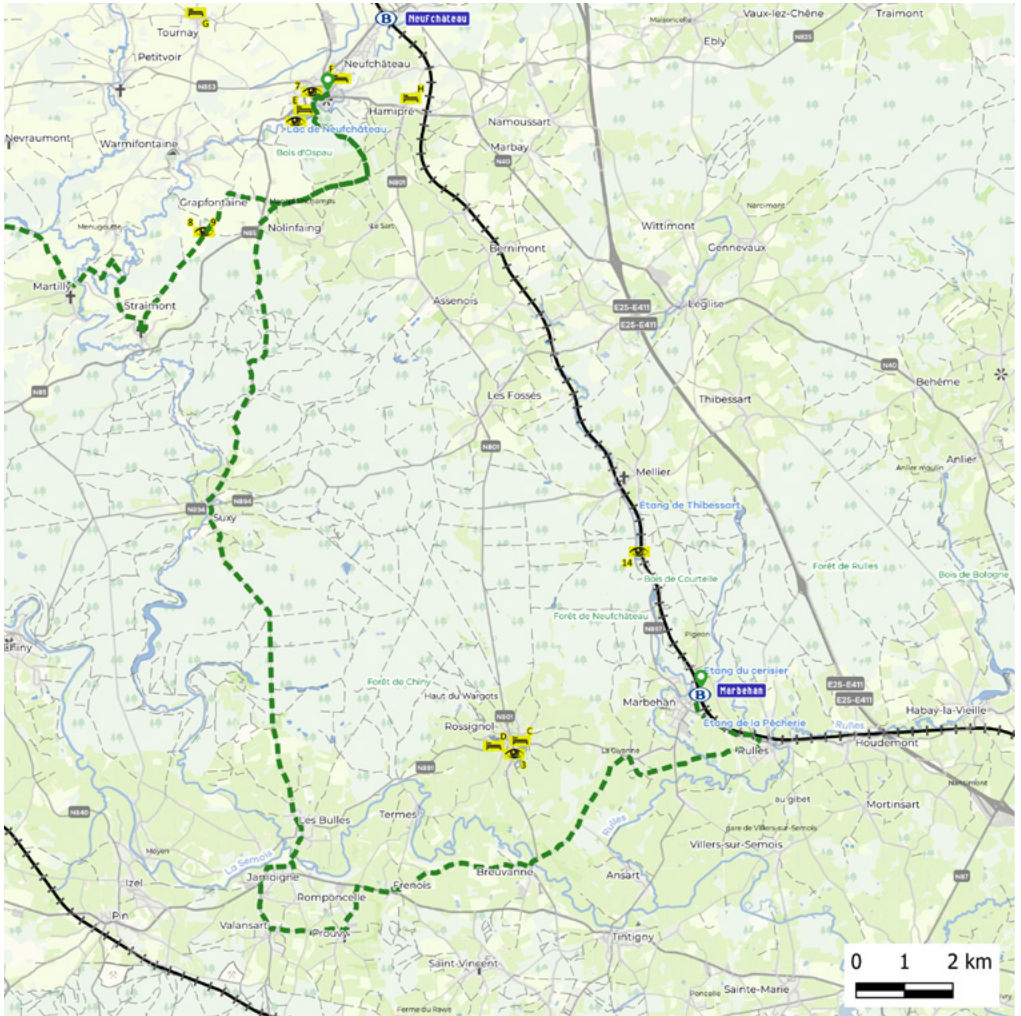
12 or 17 minutes

Before taking the train in Arlon, take the opportunity to visit the city's must-sees.

Frequency

Two trains per hour on weekdays and weekends.





km
37,3



3H05

DIFFICULTY



SIGNPOSTING

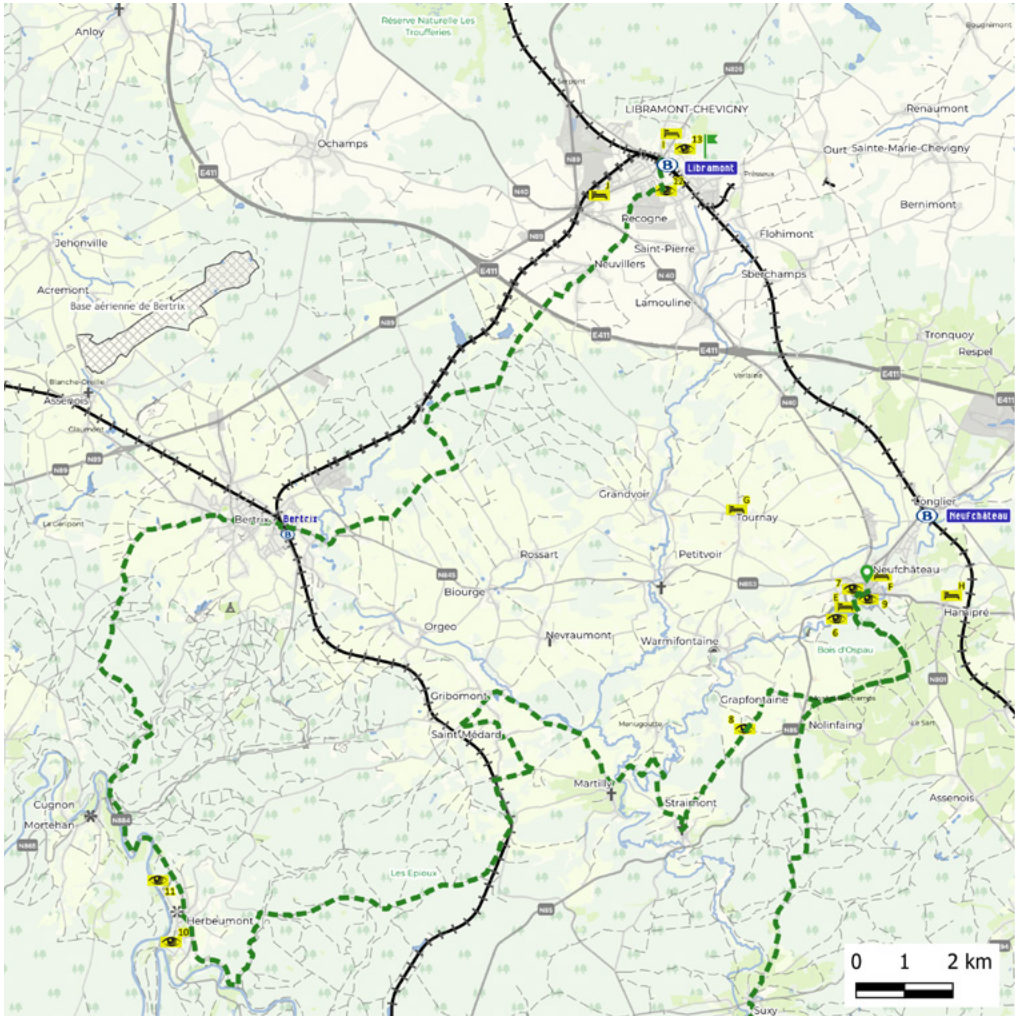
Follow the GPX



'Gare de Marbehan' (Station) - 'Gare de Neufchâteau' (Station)

- 1 At Marbehan station, take the 'Grand Rue' opposite the station and take the first street on the left. Follow the GPX to Rulles and then Orsinaifang.
- 2 Take 'Rue de la Civanne' for a few metres and turn left to Jamoigne via Breuvanne and Prouvy.
- 3 Go up via 'Les Bulles and Suxy' to reach Neufchâteau via 'Bois d'Ospeau'.





3

km
59,3



5H00

DIFFICULTY



SIGNPOSTING

Follow the GPX

Neufchâteau - 'Gare de Libramont' (Station)

- 1 Take the same path in the opposite direction for 5 km via the 'Bois d'Ospeau' by which you arrived at Neufchâteau.
- 2 Turn right towards 'Grapfontaine' and cross the 'Chaussée de Florenville'.
- 3 Follow the GPX towards Straimont, Martilly and Gribomont.
- 4 Go back down into the Semois valley to Herbeumont.
- 5 At Herbeumont, take the road towards Cugnon and turn right to go up towards Bertrix.
- 6 Go through Bertrix, go over the railway tracks.
- 7 Head towards Libramont through the woods (crossing the highway on a bridge) and reach the station.

Possibility of doing all or part of this section by train to shorten your journey:

Line 162

Between Arlon and Libramont

- **Arlon, Marbehan and Libramont**

1 fast train per hour

- **Arlon, Marbehan, Neufchâteau and Libramont**

1 train every two hours

Travel time:

- **Arlon - Marbehan:**

12 or 17 minutes

- **Marbehan - Neufchâteau:**

9 minutes

- **Neufchâteau - Libramont:**

7 minutes

Timetable and price: www.belgiantrain.be

Find **accommodation** on **page 28**
and **activities** on pages **24-26**



Discover

Find all these points of interest on the different maps thanks to the corresponding numbers. You can also discover them in the **CIRKWI** application.

1 Tour belvédère de l'église Saint-Donat, Arlon (Saint-Donat church tower)

Climb 134 steps and admire a magnificent panorama from the top of the 'Tour Belvedere'. 'Tour Belvedere' replaced the bell tower of 'Capucins de Notre-Dame d'Arlon' between 1905 and 1907. It's a true landmark and one of the emblems of the city.

Square Elisabeth 2
6700 Arlon
www.ot-arlon.be

2 Musée Archéologique (Archaeological Museum)

The Archaeological Museum contains Gallo-Roman finds from Arlon and the province of Luxembourg. It presents the most important lapidary collection in Belgium with its fragments of funerary monuments and civil buildings. The visitor can also discover the results of recent excavations in Arlon and at the Roman villa of Mageroy (Habay).

Rue des Martyrs 13
6700 Arlon
museearcheoarlon.be

3 Sentier des Plumes (Feather Trail)

A poetic walk on the theme of birds, which gives way to reverie through its facilities and to bird discovery. This 2 km family trail will be punctuated by 10 stops created with natural materials and in collaboration with local artists and craftsmen.

Rue Camille Joset 1
6730 Tintigny
www.visitgaume.be

4 The ruins of the medieval Château d'Herbeumont

Located at the top of a rocky ridge overlooking the village and the Semois River, Château Herbeumont's medieval ruins offer many remarkable views of the meanders of the river.

Rue du Château
6887 Herbeumont
www.herbeumont-tourisme.be

5 Tours romaines Jupiter et Neptune (Towers)

The Jupiter and Neptune Roman towers are classified as buildings of exceptional and unique heritage in Wallonia. You can admire them during guided tours.

Tour Neptune
Grand Place
6700 Arlon

Tour Jupiter
Rue du Marquisat
6700 Arlon

www.ot-arlon.be

6 Totemus Arlon

Go on a treasure hunt and (re)discover Arlon while having fun. 4,5 km course available in Dutch, English and German.

Download the app. Totemus
www.ot-arlon.be



© WBT - Benjamin de Rohstein



© CGT - Arnaud Siquet

© CGT - Arnaud Siquet



© WBT - Caroline Basse

7 **Leisure Park in Neufchâteau - La Vallée du Lac**

The Vallée du Lac is the perfect place for relaxation and leisure and the starting point for wild nature walks. The plus points of the Vallée du Lac include: kayak rental, canoes, paddles, pedal boats, fishing, beach, pétanque, mini-golf, playground...

Vallée du Lac • 6840 Neufchâteau
www.neufchateau.be

9 **Observatoire Centre Ardenne (Observatory)**

L'Observatoire Centre Ardenne in Neufchâteau is the only general and permanent public astronomical and nature observatory in Wallonia. It welcomes both amateur and professional astronomers wishing to analyze the stars or nature for a day, a course or a stay. *(only on reservation)*

Chemin de la Source 100 • 6840 Grapfontaine
www.observatoirecentreardenne.be

11 **Zone de baignade à Herbeumont (Bathing area)**

Looking for somewhere nice to go and enjoy the sunshine? Why not go to the Nawés beach in Herbeumont for a little relaxation. The swimming area offers great views over the ruins of the Château d'Herbeumont.

Rue de la Garenne • 6887 Herbeumont
www.herbeumont-tourisme.be

13 **Plan d'eau de Libramont (Libramont Lake)**

Halfway between an outdoor swimming pool and a small lake, the Libramont Lake is the perfect meeting place for swimming enthusiasts during the summer. These waters and the nearby playground are perfect for relaxing with your family.

Avenue de Houffalize 46 • 6800 Libramont
www.luxembourg-belge.be

8 **La fontaine aux poissons, statue de Folon (The fish fountain, Folon statue)**

The 'fish fountain' is prettily set up in a garden in the Vallée du Lac. Its inspired by artist Folon's fishing days with his brother Christian.

Vallée du Lac • 6840 Neufchâteau
www.neufchateau.be

10 **Archaeological Park**

Parc Archéologique (The Archaeological Park) reveals the remains of a Gallo-Roman complex. After the disappearance of the Gallo-Roman civilization, the place was taken over by a Merovingian family, and finally transformed into a church around the 7th century.

Rue des Thermes romains • 6700 Arlon
www.ot-arlon.be

12 **Le Musée des Celtes (Museum)**

The Museum of the Celts in Libramont offers insight into the daily lives of the Gauls and Celts, as well as the heritage they left behind. Were they barbarians, our ancestors? On the contrary, archaeological excavations reveal a fascinating world reconstructed before your eyes. The museum organizes exhibitions, events and guided tours. In addition, audio guides are on offer – designed especially by and for children (6 to 12 years old).

Place Communale 1 • 6800 Libramont
www.museedesceltes.be

14 **Les forges de Mellier**

The site of the Mellier forges is a place full of history which has had the honour of being classified since 1980 on the list of Wallonia's exceptional heritage. Discover the ancient remains made of schist stone dating from the 17th century. The forges are a true witness to the industrial architecture of the Ardennes.

Rue de la Gare 25 • 6860 Mellier
www.luxembourg-belge.be

Taste of Wallonia

Brasserie d'Arlon (Brewery)

Rue du Panorama 53
6700 Arlon
www.brasserieदारlon.com

Arel Maitrank (Aperitif maker)

Rue de l'Hydrion 115
6700 Arlon
www.ridremont.be

Brasserie Artisanale de Rulles (Craft Brewery)

Rue Maurice Grévisse 36
6724 Rulles
www.larulles.be

O'boucher du Faing

Rue du Faing 13
6810 Chiny

La Pause chocolat-thé

Visit the workshops by appointment.
Grand'Rue 31
6800 Libramont-Chevigny
pausechocolat-the.com

Chocolaterie Deremiens

Voie d'Orval 26
6810 Prouvy
www.deremiens.com



Where to Stay

Find this accommodation on the different maps thanks to the corresponding letters. You can also discover them in the **CIRKWI** application.

Before taking the train to Arlon

- A L'hostellerie du Peiffeschof (Hostel)**
Chemin du Peiffeschof 111
6700 Arlon
www.peiffeschof.be

- B Hôtel & restaurant Van der Valk**
Route de Longwy 596
6700 Arlon
www.hotelluxembourg-arlon.be

After Stage 2 on foot

- C B&B Quiet Place**  
Rue des Ecoles 243
6730 Tintigny
www.aquietplace.eu
- D B&B Aux Lochnots**
Rue de Chiny 59B
6730 Tintigny
auxlochnots.be

After Stage 3 on foot and Stage 2 by bike

- E Hôtel Eden Ardenne**
Chaussée de France 25
6840 Neufchâteau
www.eden-ardenne.be
- F La Citadine**
Avenue de la Gare 6
6840 Neufchâteau
fr.lacitadine.be

- G La roulotte de Tournay**
Route de Saint-Hubert 9
6840 Tournay
www.laroulottedetournay.be
- H Une Autre Histoire**
Rue du 87^e Régiment D'Infanterie
6840 Neufchâteau
www.luxembourg-belge.be

After Stage 4 on foot and Stage 3 by bike

- I Hotel L'Avenue**
Avenue de Houffalize 42/B
6800 Libramont-Chevigny
hotelavenuelibramont.com
- J Best Western Hôtel L'Amandier** 
Avenue de Bouillon 70
6800 Libramont-Chevigny
lamandier.be

THE « CLÉ VERTE » AND « BIENVENUE VÉLO » LABELS



Clé Verte (or Green Key in English) is an international eco-label that merits tourist establishments for their approaches and their performance in terms of the environment. In concrete terms, establishments with the Clé Verte label have reduced their ecological footprint by limiting their energy and water consumption, as well as their waste production; using more environmentally friendly cleaning products; by offering organic, local, fair trade food products, etc. And this, without the experience or comfort of their customers or their guests being affected. For more information on the label, please consult the website www.green-key.be.



For a cyclist, choosing a « **Bienvenue vélo** » establishment is opting for a place where it's great to stop, and the hosts are delighted to see you arrive with your bike. Gîtes, bed and breakfasts, hotels... put at your disposal a room to store your bike, repair tools and cleaning equipment, as well as maps and tourist routes. But «Bienvenue vélo» also includes museums, tourist attractions, restaurants and brasseries that welcome you with your 2 wheels with the same pleasure. The "Bienvenue vélo" label is synonymous with services and equipment adapted to cyclists in Wallonia!
More info on visitwallonia.be/bikeswelcome.

Notes



Follow us

 [whybelgium](#)

 [BelgianTouristOfficeWallonia](#)

[#VisitWallonia](#)

© WBT - Benjamin de Rooststein

VISITWallonia.be

The Ultimate Belgian Getaway

This brochure is published by Wallonia Belgium Tourism (WBT) Company Number: 0888.366.085.

Rue du Marché aux Herbes, 25-27 – 1000 Brussels (Head Office) / Avenue Comte de Smet de Nayer, 14 – 5000 Namur (Operational Department) Chief Editor: Etienne Claude, WBT Director General • Coordination and Publishing: S. Burgeon, S. Delcourt • Design and Layout: Lielens • In collaboration with Hike Up and Railtrip.Travel • All information, contained in this brochure has been compiled with maximum attention to current facts and details, correct at the time of publishing. This brochure is not contractual and the editor cannot be held responsible. Any errors and involuntary omissions or subsequent modifications are not the responsibility of Wallonia Belgium Tourism.